

Locus L1 18267		Dor 19,7	Fld G <sub>1</sub>	Sq A1B2	Loc. type Fill below Phantom Floor
Open	Date 25/07/97	High at 12.20	at NE	Low at 12.15	at C
Close	30/07/97	12.00	E	11.99	W
Floor:	type	Length 2.3	Width 2.0	Vol	Drawn?
Value	u	Remove	/	/	/
Photo #(1)		Photo #(2)		Loci 18251	above
Written by: JCM		Checked by: JRZ		Loci 18286	below

Unit	Phase	Stage	Stratum	PoM
------	-------	-------	---------	-----

Summary

Opened: While excavating L1825, we noticed that we had gone through F18251. Thus we changed loci to L18267.

- Limits (N) Balk under W9262
- (S) W18229
  - (E) L18273, L18277
  - (W) Balk under W18048

Closed: Came down on the sole of W18229 and the top of a nearly intact pot. Changed loci to L18286

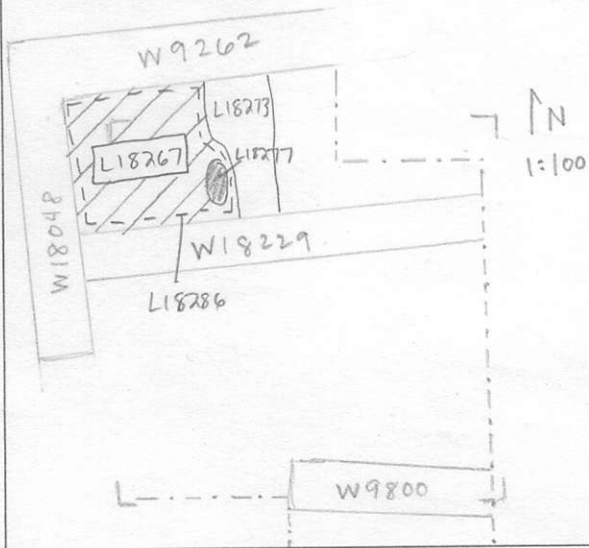
Matrix: Loose sandy tan material with mud/sand wash towards the bottom. F18251 is white and ashy with shell deposits and white organics. Same as F18271 north.

- Relations:
- Above: L18251 covers but does not seal L18267.
  - North: L18267 continues under W9262 into the balk.
  - South: L18267 reaches W18229.
  - East: L18267 is cut by pit L18277, and continues under installation L18273.
  - West: L18267 continues into the balk under W18048.
  - Below: L18267 continues down into L18286.

Additional Observations/Value: High Value.

**LOCUS**  
4 18267

Sketch plan



Photo

Photo

Section

Section

