

Locus L 18272	Dor 1977	Fld G <sub>L</sub>	Sq A131/321	Loc. type Stratified Fill.
Open 30/07/97	High at 12.20	at N	Low at 12.01	at S
Close 31/07/97	12.07	M	12.87	S
Floor: type	Length 4.0	Width 0.8	Vol	Drawn?
Value U	Remove	/	/	/
Photo #(1)	Photo #(2)	Loci 18266	above	
Written by: JCM	Checked by: JRZ	Loci 18275	18276	
		below		

Unit	Phase	Stage	Stratum	PoM
------	-------	-------	---------	-----

Summary

Opened: While excavating L18266, came down on the highest part of W18275. changed to L18272

Limits (N) W18275  
 (S) L18086  
 (E) L18086  
 (W) Balk below drain L9025

Closed: came down on the rest of W18275 and came level with the area of L18086 from the '94 search. Collapsed into L18276.

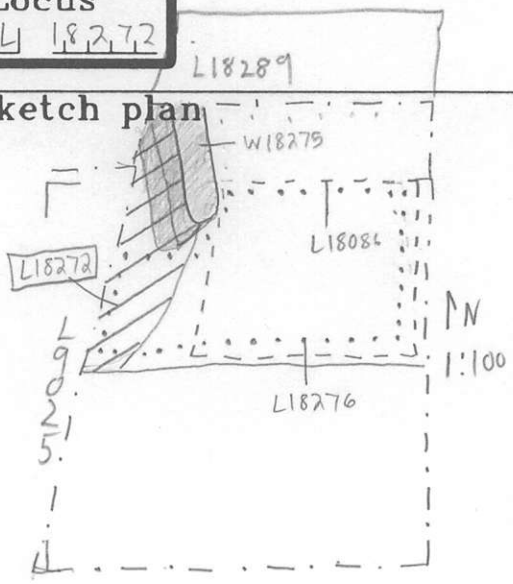
Matrix: Coarse dark greyish brown sandy soil with some charcoal

Relations: Above: L18266 continues down into L18272  
 North: L18272 reaches the east face of W18275 and continues into the balk under L18289.  
 South: L18272 continues into L18086.  
 East: L18272 continues into L18086 and reaches the east face of W18275.  
 West: L18272 continues into the balk below L9025

Additional Observations/Value: Medium Value.

**Locus**  
L 18272

Sketch plan



Photo

Photo

Section

Section

