

Locus L18273	Dor 1997	Fld G	Sq A1321111	Loc. type Installation? wall
Open Date 29/97/97	High at 12.66 N.B	Low at 12.72 S	Seals: _____	Sealed by: _____
Close Date 08/08/97	12.12 C.	12.07 C.	Seals: _____	Sealed by: _____
Floor: type _____	Length 1.0	Width 3.0	Vol _____	Loci 18233
Value 1	Remove ___/___/___	Drawn? Yes	Seals: _____	above _____
Photo #(1) see Jira	Photo #(2) _____	Seals: _____	Seals: _____	below _____
Written by: J.G.M	Checked by: J.R.Z	Seals: _____	Seals: _____	below _____
Unit _____	Phase _____	Stage _____	Stratum _____	PoM _____

Summary _____

Opened: White excavating L18233, noticed line of mudbricks on the ground and a series of odd savage shapes stacked in the balk. Designated L18233

Limits (N) Balk under W9262

(S) W18229

(E) L18243

(W) L18233, L18267, L18277.

Closed: Not closed.

Matrix: Silty grey mudbricks (12x23x23cm) sitting on their side in the southern half. The northern half is a stack of 70x9cm silty^{tan} bricks(?) that form a perfect rectangle, possibly reached by the grey mudbricks

Relations: Above: L18233 covers but does not seal L18275

North: L18275 continues into the balk under W9262

South: L18273 reaches W18229

East: L18243 reaches L18273

West: L18251/F18251 reaches the upper course of L18277 in the balk. L18267 reaches L18275 below F18251.

Below: No loci.

7/26/02 - J. BERG THIS IS THE MUDBRICK SUPERSTRUCTURE OF W18349

Additional Observations/Value: High Value

Locus

L 18273

Sketch plan



Photo

Section



Locus L 18273	Dor 19 9.8	Fld G ₁	Sq A.I. 32	Loc. type FALL TO WALL (CONTINUATION)
Open Date 2.7.07/98	High at 12.28 N ₁	Low at 11.9.7 N ₁	Seals: _____	
Close Date 3.11.07/98	12.16 S ₁	11.9.6 S ₁	Sealed by: _____	
Floor: type _____	Length 1.8	Width 0.7	Vol _____	Loci 18233
Value S ₁	Remove _____	Drawn? NO		above _____
Photo #(1) _____	Photo #(2) _____			Loci 18349
Written by: K.V.	Checked by: J.R.Z.			below _____

Unit _____	Phase _____	Stage _____	Stratum _____	PoM _____
------------	-------------	-------------	---------------	-----------

Summary _____

Opened: WE WANTED TO INVESTIGATE FURTHER THE NATURE OF ? INSTALLATION L18273 CASE

Limits (N) BALK UNDER W9269
 (S) W18299
 (E) L18313
 (W) L18320, L18277

Closed: WE CAME DOWN ON W18349

Matrix: GREY SOIL (UNDISTINGUISHABLE MUDBRICKS) AND GREY SAND () DOWN TO BROWN LOOSE SOIL WITH POSSIBLE REDEPOSITING (FLOOR MATERIAL) NORTH OF STONE PIER OF W18229 (11.93 - 11.98)

Relations: AROUND: SEE PREVIOUS CARD.
 BELOW: L18273 COVERS W18349.
 TO THE NORTH: L18273 CONTINUES IN THE BALK UNDER W9262.
 TO THE SOUTH: L18273 REACHES ^{stone pier of} W18299.
 TO THE WEST: W18286 REACHES ^{and may continue into} L18273, L18277 CUTS L18273.
 TO THE EAST: L18313 REACHES ^{and may continue into} L18273.

? IS L18273 THE (GREY) MUDBRICK PHASE OF W18349?

L18273 was never very clearly definable. It may possibly be mudbricks on top of W18349 and some mudbrick collapse from that wall on E, S and W. As excavated L18273 reaches W18349 on all 3 sides and covers it as well! It is possible that material from L18243 + L18313 on the E continues into what was excavated as L18273. The situation may be the same with L18286 mixing with/continuing into L18273 on the W. The part of L18273 between the S "face" of W18349 and the stone pier of W18229 may be either a purposefully blocked doorway or collapse in a doorway. Although floor material was found in L18313 in the east at ca 12.00 and in F18286 in the west at ca. 11.90 no floor material was found in L18273 to clearly connect these floors.

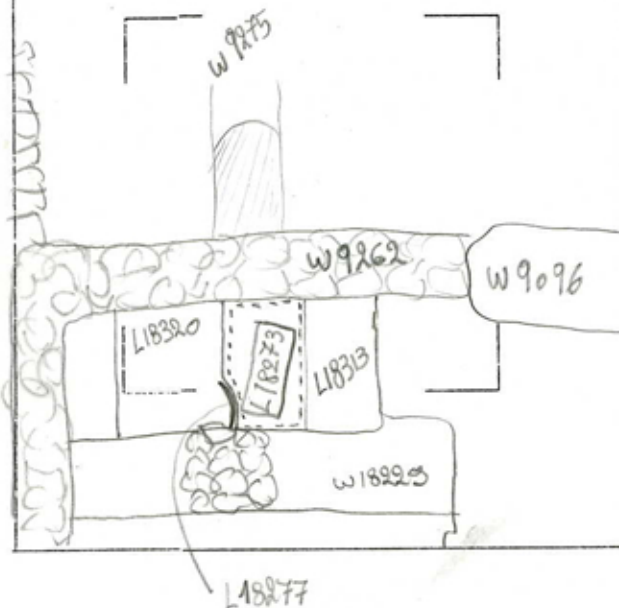
Additional Observations/Value: LOW VALUE; never very well defined.

* SEE 7/26/02 NOTE ON CARD 1

LOCUS
LJ 18273

Sketch plan

1/100 ↑ N

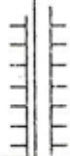


Photo

Section



Section



w18349