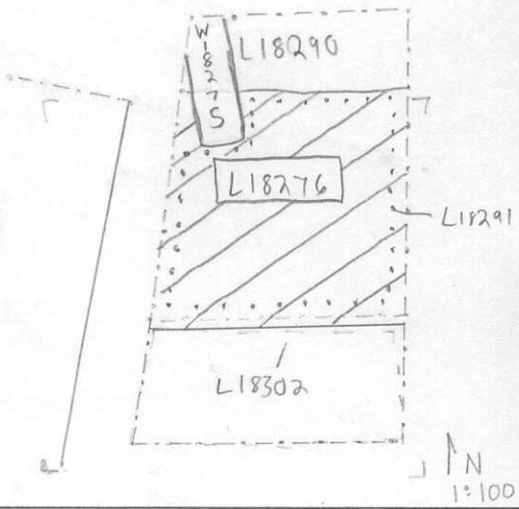


Locus <u>L 18276</u>		Dor <u>1997</u>		Fld <u>G</u>		Sq <u>A131</u>		Loc. type <u>Fill to Floor</u>			
Date		High at		Low at		Seals: _____					
Open <u>29/07/97</u>		<u>11.87</u> <u>NW</u>		<u>11.79</u> <u>SE</u>		Sealed by: _____					
Close <u>31/07/97</u>		<u>11.86</u> <u>SW</u>		<u>11.75</u> <u>NE</u>		Loci <u>18086</u> <u>18257</u> _____					
Floor: type _____		Width <u>3.5</u>		Vol _____		above _____					
Length <u>3.5</u>		Remove <u>/</u> / <u>/</u> / <u>/</u>		Drawn? <u>No</u>		below _____					
Value <u>N</u>		Photo #(1) _____		Photo #(2) _____		Loci <u>18291</u> _____					
Written by: <u>JCM</u>		Checked by: <u>JRZ</u>		below _____							
Unit _____	Phase _____	Stage _____	Stratum _____		PoM _____						
Summary _____											
Opened: <u>Opened to look for the floor noticed in L18086 in 1994.</u>											
Limits (N) <u>L18290</u>											
(S) <u>L18302</u>											
(E) <u>Balk</u>											
(W) <u>Balk</u>											
Closed: <u>did not come down on a floor and decided to renumber the locus at about the level of the floor material in L18290 and continue down off season</u>											
Matrix: <u>Mix of clay midmicic debris and loose sandy material.</u>											
Relations: <u>Above: L18272 and L18086 cores but do not seal L18276.</u>											
<u>North: L18276 reaches L18290, and W18275.</u>											
<u>South: L18276 continues into L18302</u>											
<u>East: L18276 continues into the balk</u>											
<u>West: L18276 continues into the balk.</u>											
<u>Below: L18276 cores but does not seal L18291.</u>											
Additional Observations/Value: <u>Medium Value</u>											

LOCUS

LJ 18276

Sketch plan



166898



166898



166895

Photo

Section

