

Locus LJ 18284	Dor 19,7	Fld G ₁	Sq A53,3	Loc. type Floor Makeup + Fill to Floor
Date Open 3.0/07/97 Close 3.1/07/97	High at 12.9.7	Low at 12.8.4		Seals: _____ Sealed by: _____
Floor: type CIP	12.7.1	12.6.8		Loci 18281 _____ above _____
Length 2.2	Width 9.3	Vol _____		below _____
Value ?d	Remove 30/07/97	Drawn? Yes		
Photo # (1) none	Photo # (2) _____			
Written by: JCM	Checked by: JAZ			
Unit _____	Phase 10	Stage _____	Stratum _____	PoM _____

Summary

Opened: while excavating L18281, came down on F18281 = F18246. Changed to L18284.

Limits (N) Pit 9251

- (S) L18252
- (E) Bulk under west face of W9275
- (W) W9140

Closed: while excavating L18284, came down on F18284 = F18252. Changed to L18292 and continued down.

Matrix: F18281 = F18246 is ashy grey with charcoal flecks. L18284 is hard packed reddish mudmic material.

Relations: Above: L18281 covers but does not seal L18284.

North: L18284 is cut by Pit 9251.

South: L18284 continues south as L18252.

East: L18284 continues into the bulk under the west face of Phase b W9275.

West: L18284 reached W9140.

Below: L18284 came down on F18284 = F18252. L18284 covers but does not seal L18291.

F18284 continues under the west face of Phase b W9275 and is probably cut by the east face (Phase e). F18284 reached W9140, is cut by Pit 9251, and continues south as F18252.

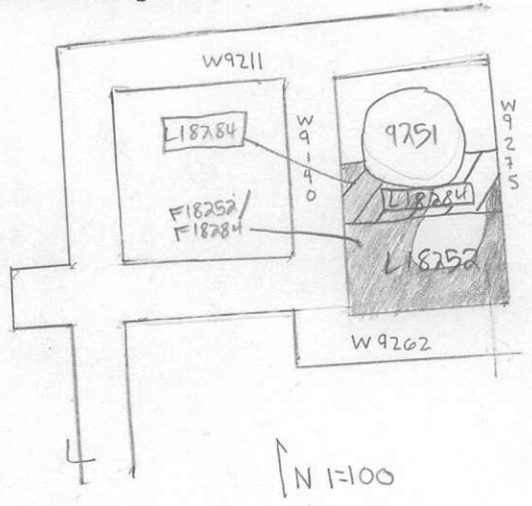
F/L18284 continues below the west face of W9275. However, the east face of W9275 goes down 3 courses more than the west face. Therefore it is uncertain if the east face of W9275 cuts F/L18284 or is reached by F/L18284.

Additional Observations/Value: Low Value.

8

LOCUS
L 18284

Sketch plan



Photo

Photo

Section

Section

