

Locus L 18293	Dor 1917	Fld G ₁	Sq A333	Loc. type Fill in Downway (Destruction)
Open 31/07/97	Date	High at 12.90 M	Low at 12.85 S	Seals: _____
Close 04/08/97		12.05 C	12.05 C	Sealed by: _____
Floor: type ce		12.05 C	12.05 C	Loci 18230 9967 _____
Length 1.0	Width 0.6	Vol _____	Drawn? YES	above _____
Value dl	Remove ___/___/___			below _____
Photo #(1) see Jva	Photo #(2) _____			
Written by: JCM	Checked by: JRZ			

Unit _____	Phase 9	Stage _____	Stratum _____	PoM _____
------------	---------	-------------	---------------	-----------

Summary _____

Opened: while cleaning W18250, we noticed a vertical bre where discernable bricks stopped and rubble began. This downway was labeled L18293.

Limits (N) W9909
 (S) W18250
 (E) L18242
 (W) L18241

Closed: Came down on F18293. End of season.

Matrix: F18293 sized stones and yellowish kurkar filled mudbrick debris.

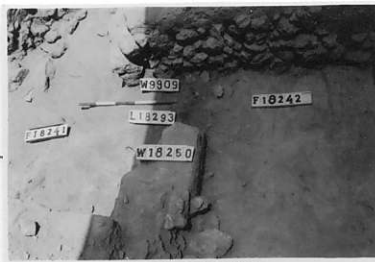
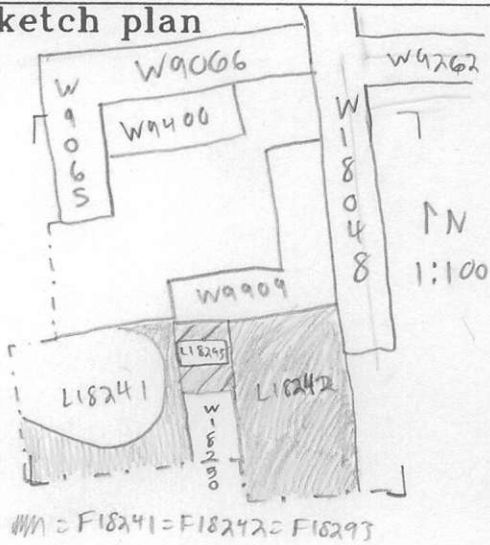
Relations: Above: L18230 + L9967 cover but do not seal L18293.
 North: L18293 reaches W9909.
 South: L18293 reaches W18250.
 East: L18293 continues into L18242.
 West: L18293 continues into L18241.
 Below: L18293 comes down on F18293.

3/02 EB-5 perhaps collapsed mudbrick over the doorway comparable to L18249.

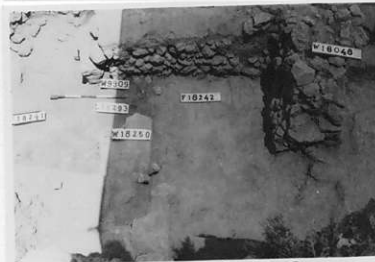
Additional Observations/Value: High value. Philistine Monochrome Stoner found here.

Locus
L 18293

Sketch plan



166958



166959



166960



166956

Photo

Section

