

Locus L 18297	Dor 1997	Fld G	Sq A1311	Loc. type Fill to Floor
Open 01/08/97	Date	High at 11.71 NW	Low at 11.65 SE	Seals: _____
Close 08/08/97		11.66 SW	11.47 SE	Sealed by: _____
Floor: type Ce		11.66 SW	11.47 SE	Loci 18291 _____
Length 1.5	Width 1.5	Vol _____		above _____
Value IV	Remove / /	Drawn? /		Loci 18321 _____
Photo # (1) See Isa	Photo # (2) _____			below _____
Written by: JCM	Checked by: JRZ			

Unit _____	Phase _____	Stage _____	Stratum _____	PoM _____
-------------------	--------------------	--------------------	----------------------	------------------

Summary _____

Opened: while excavating L18291, came down on W18275 and W18296. Area bounded by these walls on the southwest was designated [L18297].

Limits (N) Balk, W18275
 (S) W18296
 (E) W18275, L18295
 (W) Balk.

Closed: Came down on F18297 = F18295.

Matrix: Sandy tan loose soil with mudbrick inclusions.

Relations: Above: L18291 continues down into [L18297] and does not seal it
 North: [L18297] continues into the balk and reaches W18275.
 South: [L18297] reaches W18296.
 East: [L18297] reaches W18275, and continues into L18295.
 West: [L18297] continues into the balk.
 Below: [L18297] comes down on F18297 = F18295 = F18290.

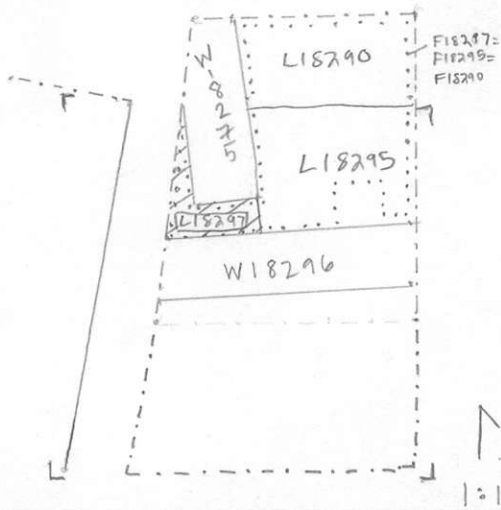
F18297 = F18295 = F18290 reaches W18296 and continues under W18275.

Gap between W18296 and W18275 may be a doorway

Additional Observations/Value: Medium Value

Locus
L 18,29,7

Sketch plan



167618

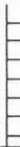
Photo



167615

Photo

Section



Section

