

Locus L 18298	Dor 1917	Fld G _L	Sq A J J 1	Loc. type Installation (Basin)
Open 04/08/97	High at 11.61 N.W	Low at 11.53 S.W	Seals: _____	
Close 08/08/97	11.61 N.W	11.53 S.W	Sealed by: _____	
Floor: type C.P.	11.61 M.W	11.53 S.W	Loci 18295	
Length 0.8	Width 0.9	Vol _____	above _____	
Value 11	Remove 08/06/98	Drawn? Yes	Loci 18311	
Photo #(1) see Jsva	Photo #(2) 175152-175155 (1998)		below _____	
Written by: J.C.M.	Checked by: J.R.Z.			

Unit _____	Phase _____	Stage _____	Stratum _____	PoM _____
------------	-------------	-------------	---------------	-----------

Summary _____

Opened: While excavating L18295, came down on F18295 and L18298.

Limits (N) none
 (S) W18296
 (E) none
 (W) none

Closed: not closed. end of season.

Matrix: Shallow basin with yellow almost claylike surface.
 1998 - Surface of orangish yellow ^{mud} plaster material 1/2 cm thick, layered above 4cm. of ashy soil in turn layered above 4cm of mudbrick material. Small charcoal deposit found in SW corner above installation.

Relations: Above: L18295 covers but does not seal L18298.
 North, East, West: No relationships; installation rest low on F18295
 South: L18298 reaches W18296.
 Below: L18298 rests on F18295.

1998 - Installation was dismantled and found to not rest on F18295 as previously thought.

Additional Observations/Value: Medium Valve.

175152



175156



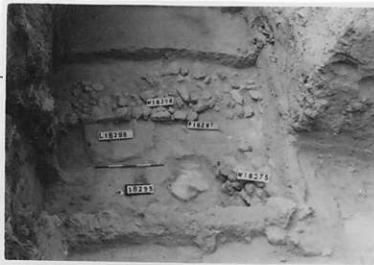
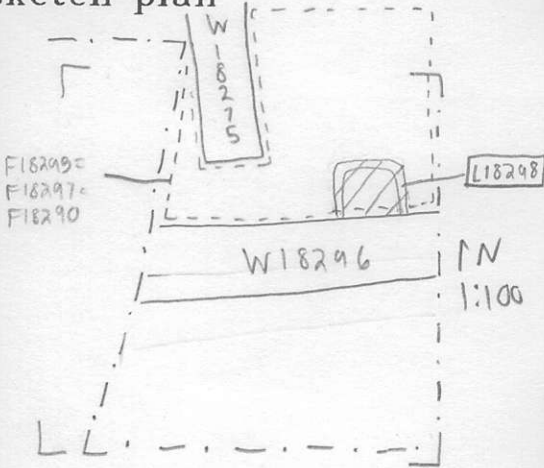
175155



Locus

L 18298

Sketch plan



167619



167614



167617

Photo

Section

