

Locus W 18315	Dor 1998	Fld G	Sq A.I.31	Loc. type stonewall		
Open	Date 09/07/98	High 12.0.0	at W	Low 11.8.0	at C	Seals: _____
Close	Date 07/08/98	High 11.0.4	at W	Low 10.9.6	at E	Sealed by: _____
Floor:	type _____	_____	_____	_____	_____	Loci eroded out of balk
Length	3.3	Width	0.2	Vol	_____	above _____
Value	i	Remove	1/1/1	Drawn?	yes	below _____
Photo #(1)	175399	Photo #(2)	175523	Loci _____		
Written by:	H.A.K	Checked by:	J.R.Z	Loci _____		

Unit _____	Phase _____	Stage _____	Stratum _____	PoM _____
------------	-------------	-------------	---------------	-----------

Summary _____

Opened: [W18315] was exposed due to erosion between seasons

Limits (N) L18310, L18316, L18330, L18331, L18346
 (S) balk
 (E) balk
 (W) balk
 Closed: not closed

Matrix: stone wall eroded out of balk, only 2/3 of northern face exposed.
 Field Stones approx. 20-40 cm in diameter, 6 courses high at the end of 1998 season

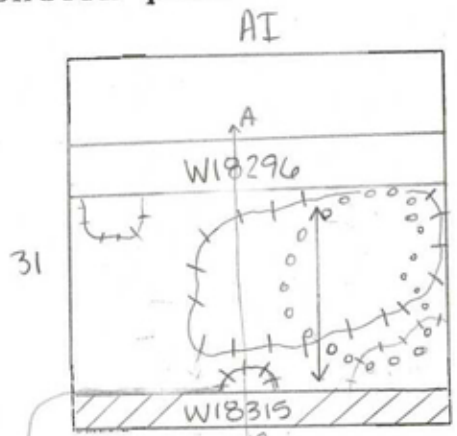
Relations: Above: None, eroded from balk but probably debris equaling L18302(?) which was above 18310 of 198
 North: L18310, L18316 and L18330 all reach [W18315]. F18316 was observed reaching W18315, (F18316 was also observed reaching W18296 from the south indicating the contemporary relationship between [W18315] and W18296). F18330 was not observed reaching [W18315] although likely it did because F18330 did reach W18296.
 L18331 and L18346 were probably cut by W18315 (both loci are below floor level and were cut by W18296) although this relationship is not yet clear and W18315 has not yet begun to float.
 No other relations - Wall in balk.
 Note that what appears to be a 3-5 cm wide line of dark material was observable in L18331, suggests that W18315 is indeed foundation in L18331 and L18346

Additional photos #175400-404, #175524-525

Additional Observations/Value: High value wall unfortunately following E/W balk line.

Locus
W 18315

Sketch plan



VB
+++ F18316
oooo F18330

Foundation
Trench?



175495



175523



175468

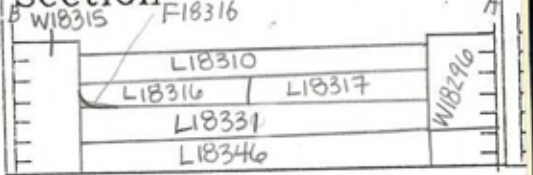


175400
175399



175620

Section



Looking West



175401

Locus WJ 18315	Dor 19 ₉₉	Fld G ₁	Sq A ₁ 3 ₁	Loc. type WALL (CONTINUATION CARD)
Open 27/07/99	Date	High at 11.96 c ₁	Low at 11.73 c ₁	Seals: _____
Close 27/07/99		11.01 c ₁	10.95 E ₁	Sealed by: _____
Floor: type _____		_____	_____	Loci _____
Length 3.3	Width 0.3	Vol _____	_____	above _____
Value 1	Remove _____	Drawn? YES	_____	_____
Photo # (1) _____	Photo # (2) _____			Loci _____
Written by: KV	Checked by: J.R.Z			below _____

Unit _____	Phase _____	Stage _____	Stratum _____	PoM _____
-------------------	--------------------	--------------------	----------------------	------------------

Summary _____

Opened: Excavation was renewed against the North face of W18315 in 1999

Limits (N) L18382 (PLUS SEE PREVIOUS CARDS) AND L18379

(S) BALK

(E) BALK

(W) BALK

Closed: W18315 WAS FLOATING BUT REMAINS VISIBLE IN THE BALK

Matrix: 4-5 COURSES HIGH MADE OUT OF HEAD TO DOUBLE HEAD SIZE FIELDSTONES

Relations: ABOVE: SEE PREVIOUS CARDS

NORTH: THE FILL OF L18382 WAS CUT BY THE LOWEST COURSE OF W18315 BUT THE WALL WAS FLOATING IN THE SAME LOCUS VERY SOON (DITTO FOR L18379)

SOUTH: W18315 CONTINUES INTO THE BALK

EAST: DITTO

WEST: DITTO

BELOW: NO RELATIONS BELOW BUT W18315 SPTS VERY CLEARLY ON TOP OF SEVERAL FINE LAYERS OF DARK SOIL INTERMINGLED WITH WHITE OR BLUE LINES (± 20 CM), FOLLOWED BY THICK LAYERS OF YELLOW AND DARK SAND. THE FINE DARK LAYERS MAY HAVE FORMED PART OF THE F.T. OF W18315. On the East end the wall seems constructed on a ca 20 cm thick lense of pure sand.

Additional Observations/Value: MEDIUM VALUE

Locus

W 18315

Sketch plan



Photo

Photo

Section A-B

Section



LOOKING SOUTH

Fine dark layer(s)