

Locus L18339	Dor 1998	Fld G	Sq AJ32	Loc. type floor material + fill below
Open	Date 2.8/07/98	High at 1.2.0.8	Low at 1.1.9.5	Seals: _____
Close	0.6/0.8/98	1.1.9.3	1.1.8.6	Sealed by: _____
Floor: type	_____	_____	_____	Loci 18241
Length 2.2	Width 1.2	Vol _____	_____	above _____
Value ?d	Remove 1/1/1	Drawn? no	_____	below _____
Photo #(1) _____	Photo #(2) _____	Loci 18372	_____	_____
Written by: HAK	Checked by: J.R.Z	below _____	_____	_____

Unit _____	Phase 9	Stage _____	Stratum _____	PoM _____
------------	---------	-------------	---------------	-----------

Summary \_\_\_\_\_

Opened: beginning of season, opened L18339 to excavate below F18241

Limits (N) unexcavated area below L18249  
 (S) balk  
 (E) W18250  
 (W) L18307

Closed: end of season and came down on lower continuation of W18250.

Matrix: medium brown compact soil, patch of dark, ashy soil in southeast corner in a area that was eroded away during the offseason (possibly above floor level of destruction F18241 in this part determining the value of possibly disturbed). Two large grinding stones found in this corner (basket #s 184232 + 184233)

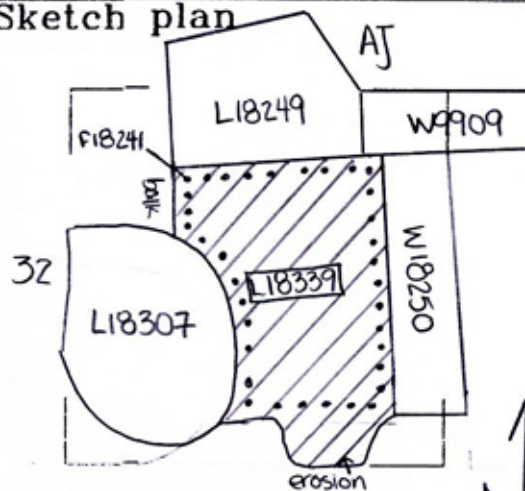
Relations:  
 Above: L18241 covers but does not seal L18339.  
 North: L18339 possibly continues into unexcavated area below L18249 although relations are unclear without further excavation below L18249.  
 South: L18339 continues into the balk.  
 East: L18339 reaches W18250, though further excavation is needed to define a floor reaching W18250 in this area.  
 West: L18339 may continue into L18307 as the same material. L18307 was previously excavated as an area to the west of F18241 with no floor material. Therefore L18307 was probably below floor material of the destruction floor as is L18339.  
 Below: no relations.

Additional Observations/Value: Low value

Locus

L 18339

Sketch plan



Photo

Section

