

<b>Locus</b> L 18380	<b>Dor</b> 19 <sub>99</sub>	<b>Fld</b> G <sub>1</sub>	<b>Sq</b> AI 314	<b>Loc. type</b> INSTALLATION/HOLE
<b>Open</b> 13/07/19	<b>Date</b>	<b>High</b> at 11.51	<b>Low</b> at 11.46	<b>Seals:</b> _____
<b>Close</b> 14/07/19				<b>Sealed by:</b> _____
<b>Floor:</b> type _____				<b>Loci</b> 18359 _____
<b>Length</b> 0.2	<b>Width</b> 0.2		<b>Vol</b> _____	<b>above</b> _____
<b>Value</b> 4	<b>Remove</b> _/_/_		<b>Drawn?</b> YES	
<b>Photo #</b> (1) 184616		<b>Photo #</b> (2) 184617		<b>Loci</b> 18383 _____
<b>Written by:</b> KVL		<b>Checked by:</b> J.R.Z		<b>below</b> _____

<b>Unit</b> _____	<b>Phase</b> _____	<b>Stage</b> _____	<b>Stratum</b> _____	<b>PoM</b> _____
-------------------	--------------------	--------------------	----------------------	------------------

**Summary** \_\_\_\_\_

**Opened:** DURING THE EXCAVATION OF L18374 A CIRCULAR FEATURE BECAME VISIBLE WHICH WAS ASSIGNED L18380

**Limits (N)**  
 (S) } L18378  
 (E) }  
 (W) }

**Closed:** THE FILL WITHIN L18380 WAS EXCAVATED AND BOTH L18380 AND L18378 WERE CLOSED, L18383 WAS OPENED BELOW

**Matrix:** THIS IS A VANSTEENHUYSE PIT. THE CIRCULAR FEATURE WAS LINED WITH WHITE (ASHY?) MATERIAL FROM TOP TO BOTTOM (± 20 CM). THE FILL WAS LIGHT BROWN SOIL, VERY DISTINCTIVE OF THE SANDY MATERIAL OF L18378. THIS IS AN ALMOST PERFECTLY CYLINDRICAL PIT.

**Relations:** ABOVE: L18359 AND L18378 COVER BUT DO NOT SEAL L18380

NORTH }  
 SOUTH } L18380 cuts L18383  
 EAST }  
 WEST }

BELOW: L18383 cuts and covers L18383.

No floor/surface was detected in L18374 from which L18380 could have been cut; presumably such a floor/surface once existed.

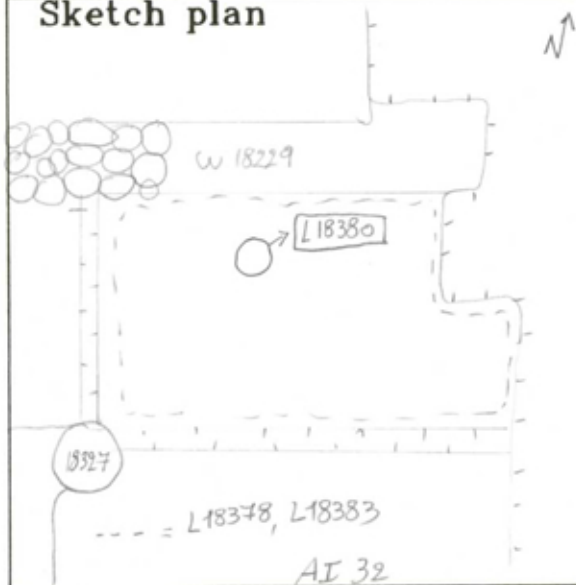
This is not a "classic" vansteenhuyse pit, as shown by the brown soil found inside. Usually such fire pits are found filled with ash as part of a series of ashy layers. The use of this pit is uncertain.

photos: 184618  
**Additional Observations/Value:** HIGH VALUE

Locus

L 18380

Sketch plan



187617



Photo

187617



Section



Section

