

# Locus Card

DOR 2000

L 18431      *Area* G      *Sq:* AJ- /32-      *Loc. type:* Fill  
High at Low at      *written by:* WSB      created  
Open 11/07/2000 11.51 n 11.42 e      *checked by:* EBS      updated: 05/08/2000  
Close 11/07/2000 11.41 n 11.32 e      **Floor** 0.00  
Length 2.70 width: 0.62 volume:      Floor type (old)  
Removed: 11/07/2000      Drawn? No

Integrity:

s

*unit:* --      *phase:* 11a      *stage:* xi      *stratum:*      *PoM:*  
*summary:*

**Opened:** Pedestal below W18048. The pedestal was still standing at the start of season.

**Limits (N)** Baulk created from pedestal below wall W18229.

(S) Baulk under Roman cardo

(E) L18406 / L18416 (multiple floors) to N, L18407 (fill) to S, and and pit L18407 in SW corner.

(W) L18410

**Closed:** Reached preserved top of L18410 (1999).

**Matrix:** Sandy, brown matrix, darker brown and more compact to S.

**Relations:**

**Importance:** Low value. Pedestal with little pottery.

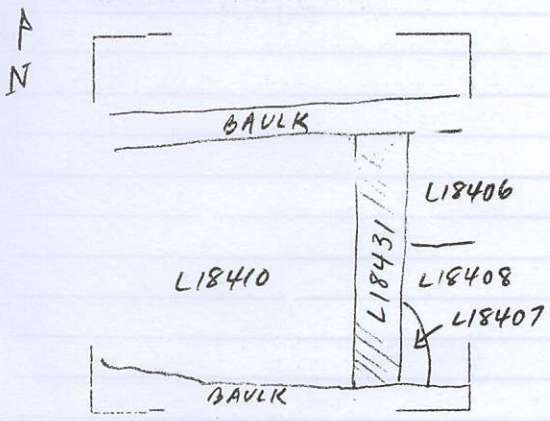
Images	L 18431	Related loci:	Features
	is_above	18450	
	is_below	18048	
	is_above	18442	



THESE PHOTOS ARE OF L18437  
IN AI-31

LOCUS  
L 18431

Sketch plan



Photo

Photo

Section

Section

