

Locus Card

DOR 2000

L 18432 *Area* G *Sq:* AI- /32- *Loc. type:* Baulk cleaning
High at Low at *written by:* WSB created
Open 11/07/2000 11.75 e 11.27 w *checked by:* EBS updated: 05/08/2000
Close 12/07/2000 11.41 e 11.27 w **Floor** 0.00
Length 2.60 width: 0.62 volume: Floor type (old)
Removed: 12/07/2000 Drawn? No

Integrity:

unit: -- *phase:* -- *stage:* -- *stratum:* *PoM:*
summary:

Opened: Pedestal below wall W18229

Limits (N) L18418

(S) Auxiliary baulk created from pedestal below W18229.

(E) Subsidiary section

(W) Physical separation between E and W extent of wall pedestal created by dip in elevation.

Closed: When the elevation of L18440 to N was reached.

Matrix: Ashy matrix down to white (plaster) surface, brown sandy matrix below.

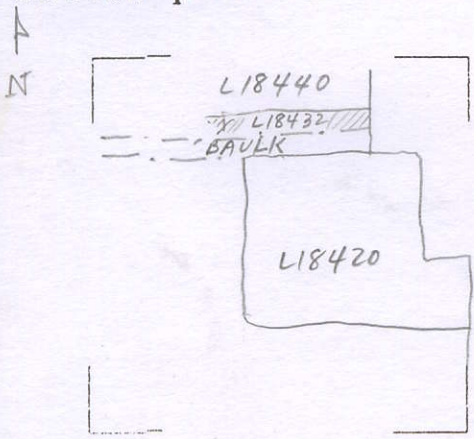
Relations: Pedestal below wall W18229 cut back to create .40m wide baulk. N side of pedestal was cut back.
Due to the limited finds, various matrices were combined into single locus.

Importance: Low value, narrow strip with little pottery.

Images	L 18432	Related loci:	Features
	is_above	18440	
	is_below	18229	
	sealed_by	18229	

LOCUS
L 18432

Sketch plan



Photo

Photo

Section

Section

