

# Locus Card

DOR 2000

L 18442      *Area* G      *Sq:* AJ- /32-      *Loc. type:* Pit  
High at Low at      *written by:* WSB      created  
Open 13/07/2000 11.49 w 11.34 e      *checked by:* EBS      updated: 04/08/2000  
Close 13/07/2000 11.49 w 11.34 e      **Floor** 0.00  
Length 0.63 width: 0.50 volume:      Floor type (old)  
Removed: 13/07/2000      Drawn? No

Integrity:

u

*unit:* --      *phase:* 11b      *stage:* xii      *stratum:*      *PoM:*  
*summary:*

**Opened:** Take down pedestal / baulk from 1999 season.

**Limits (N)**

(S) Baulk under Roman cardo.

(E) Cut by pit L18407 and fill 18408.

(W) Cut by floor make-up and fill below L18410

**Closed:** Pit contents and surface stones removed.

**Matrix:** Sand filled pit with 3 cobbles at the surface around the perimeter. Very large bones and sherds in the sand.

**Relations:** While the top of the pit was clear, the bottom cut into the sand and clay layers of L18455, so it was difficult to distinguish pit sand from L18455 sand. The very large bones and sherds, present in the top of the pit were used as an indicator for the bottom as well.

- This pit was distinguished at approximately the same elevation as L18441 (cleaning) to the W.

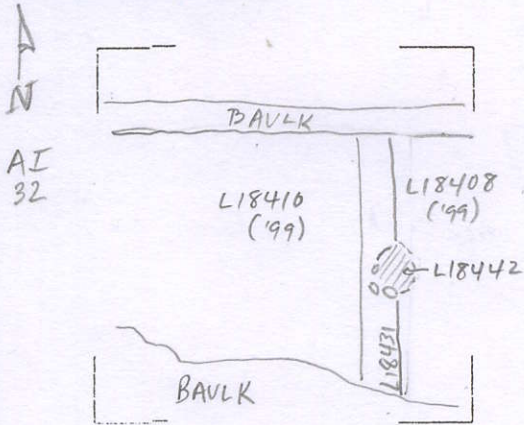
**Importance:** High value for zoologist.

Images	L 18442	Related loci:	Features
	is_above	18450	
	is_below	18431	

Locus

L1 18442

Sketch plan



AI  
32

Photo

Photo

Section

Section

