

# Locus Card

DOR 2000

L 18444      *Area* G      *Sq:* AI- /32-33      *Loc. type:* Multiple surface  
High at Low at      *written by:* WSB      created  
Open 14/07/2000 11.44 nw 11.23 s      *checked by:* EBS      updated: 11/08/2000  
Close 26/07/2000 11.42 ne 10.09 sw      **Floor** 11.42 ne 10.09 sw  
Length 3.80 width: 1.80 volume:      Floor type (old)  
Removed: 26/07/2000      Drawn? No

c

Integrity:

u

*unit:* Hor. 3      *phase:* 11

*stage:* xiv

*stratum:*

*PoM:*

*summary:*

**Opened:** Clearly delineated multiple surfaces revealed by cleaning L18440.

**Limits (N)** Baulk under walls W9262 and W18349 continuing on a line to the W.

(S) Baulk under wall W18229.

(E) Baulk

(W) Baulk below wall W9915.

**Closed:** Cleared down to plastered surface below.

**Matrix:** Multiple surfaces of brown sand and grey ashy matrix above a thin, dark brown clayish layer immediately above a thick white plastered surface.

**Relations:** L18444 continues into the baulks to the N and E, and to the S = L18452 and L18437, and in the 1999 test trench L18397 = F18487 (to N) = F18497 (to W).

- L18444 surfaces slope down to the south. As excavated a single plaster surface to the N slopes down towards the S and splits into an upper and lower surface (see section).
- The lower surface was traced.

**Importance:** Medium value. Clearly traceable locus with moderate amount of pottery. Transitional LB / Iron I a pottery.

Images	L 18444	Related loci:	Features
d08Z3-3000	is_above	18480	
d03Z3-3083	is_below	18440	
d03Z3-3121	Seals	18480	
d03Z3-3124			
d03Z3-3132			
d03Z3-3030			
d03Z3-3027			
d03Z3-3085			
d03Z3-3044			
d03Z3-3020			
d03Z3-3630			
d03Z3-3034			
d03Z3-3819			
d03Z3-3821			
d03Z3-3822			

192429



192431

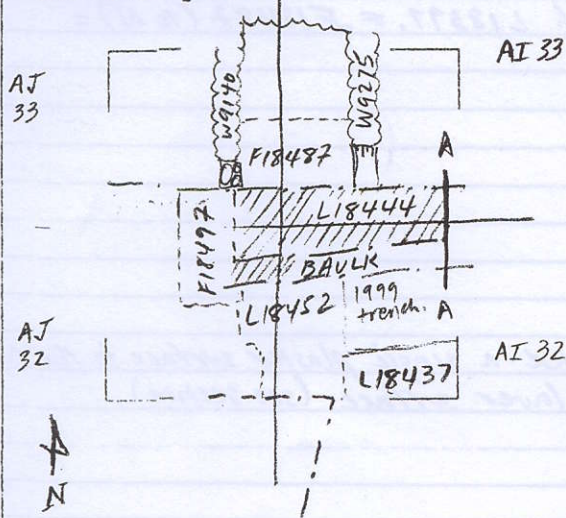


192430



Locus  
L 18444

Sketch plan



Photo

Photo

Section

Section



Section A, looking E