

Locus Card

DOR 2000

L 18452 **Area G** **Sq:** AI- /32- **Loc. type:** Multiple surface
High at Low at **written by:** WSB created
Open 18/07/2000 11.28 nw 11.26 e **checked by:** EBS updated: 11/08/2000
Close 21/07/2000 11.04 w 10.86 n **Floor** 11.01 e 10.92 w
Length 2.40 width: 2.45 volume: Floor type (old)
Removed: 21/07/2000 Drawn? Yes

c

Integrity:

u

unit: Hor. 3 **phase:** 11

stage: xiv

stratum:

PoM:

summary:

Opened: Continuation of multiple surface excavated to the SE (L18437)

Limits (N) Baulk

(S) Baulk

(E) 1999 test trench (L18420 at bottom).

(W) Baulk

Closed: After having reached an extensive plaster surface with burning, the loci were changed to proceed down with sealed and unsealed loci [Subsequently all MSA deemed sealed deposits].

Matrix: Successive surfaces/lenses of brown sandy soil, ashy layers, sand lenses, thin brown clay lenses and plastered surfaces. The bottom of this locus distinguished by a burning directly on the plaster surface.

Relations: This matrix was excavated to the SE as L18437, and continues to the N as L18444. The loci to the N and S slope down towards the S. This locus lies relatively flat. Pit L18464 was identified at the top of this locus.

- Photos 192347 - 192349 were taken on 21/07/00.

F18452 = F18437 = F18397 (1999) = F18444 form a continuous surface through the excavation area. F18487 = F18497.

Importance: High value. Transitional LB/Iron I pottery.

Images	L 18452	Related loci:	Features
d03Z3-3025	is_above	18483	
d03Z3-3832	is_below	18445	
d03Z3-3834	sealed_by	18456	
	Seals	18483	
	seals	18489	
	is_below	18456	
	is_above	18489	

192347



192348

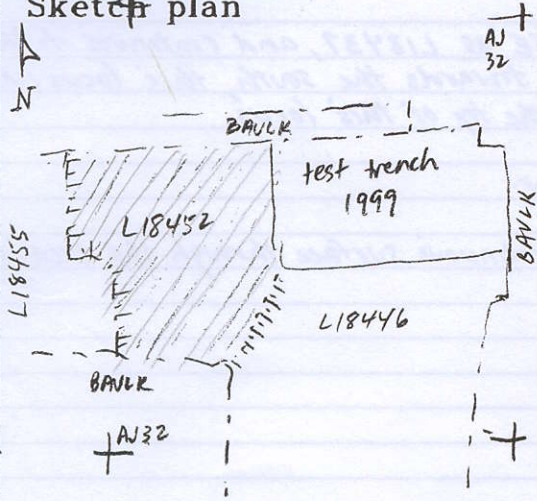


192349



Locus
LI 18452

Sketch plan



Photo

Photo

Section

Section

