

# Locus Card

DOR 2000

L 18454      **Area** G      **Sq:** AI-AJ/33-      **Loc. type:** Outdoor deposit.  
High at Low at      **written by:** WSB      created  
Open 18/07/2000 11.91 se 11.72 nw      **checked by:** EBS      updated: 11/08/2000  
Close 28/07/2000 11.72 nw 11.67 s      **Floor** 0.00  
Length 2.50 width: 2.10 volume:      Floor type (old)  
Removed: 28/07/2000      Drawn? No

Integrity:

s

**unit:** Hor. 2      **phase:** 12? / 11??      **stage:** xiii      **stratum:**      **PoM:**  
**summary:**

**Opened:** It became evident that L18443 spanned 2 different matrices from N-S, so 2 different loci were opened with a twilight zone between them.

**Limits (N)** Bulk under W9211

(S) L18453

(E) Bulk under W9275

(W) Bulk under W9140

**Closed:** L18453 to S became new locus, therefore this adjacent matrix also needed a new number.

**Matrix:** Horizontal sand striations (ca. 8cm thick) above a clean, brown sandy matrix with sand and clay lenses in the S.

**Relations:** ..

- Very small sherds.
- The twilight zone was included with this locus rather than L18453 though typical lenses and matrices of each of the two loci were present.
- Hypothetical foundation trench L18469 may disturb this locus.
- L18454 and L18486 below are the same matrix, but L18486 had LB pottery and L18454 had transitional LB/IA pottery.

See section drawing for L18486

**Importance:** Medium value -transition LB/Iron Ia pottery with Cypriot sherds in each basket.

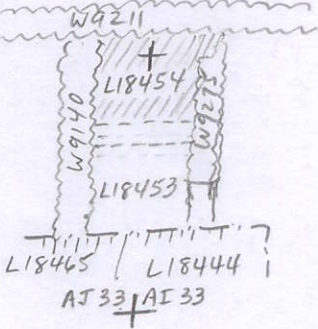
Images	L 18454	Related loci:	Features
d03Z3-3122	is_above	18486	
	is_below	18443	

Locus

L 18454

Sketch plan

N



Photo

Photo

Section

Section

