

# Locus Card

DOR 2000

L 18455      *Area* G      *Sq:* AJ- /32-      *Loc. type:* Outdoor subsidence or wash  
High at Low at      *written by:* WSB      created  
Open 18/07/2000 11.36 n 11.21 s      *checked by:* EBS      updated: 11/08/2000  
Close 04/08/2000 11.12 ne 10.99 s      **Floor** 0.00  
Length 3.12 width: 2.30 volume:      Floor type (old)  
Removed: 04/08/2000      Drawn? No

Integrity:

u

*unit:* Hor. 3      *phase:* 11b      *stage:* xii      *stratum:*      *PoM:*  
*summary:*

**Opened:** In the effort to clarify the relationship of the wash and pooling to the proximate matrices, and to rescue large bones and sherds from being trampled.

**Limits (N)** Baulk

(S) Baulk under Roman cardo.

(E) Drop in elevation from 1999 excavation (L18416, L18408)

(W) Baulk and contemporary staircase.

**Closed:** While sand and mud lenses continued down, the large sherds and bones ceased.

**Matrix:** Intermingled sand and mud lenses.

**Relations:** ..

- Very large sherds and bones.

- Below grey ashy deposits similar to ash layers in multiple surface accumulations (eg. L18452). This wash may have washed away some of the ashy matrix and caused its poor preservation.

L18455 = L18450 (see note on L18450).

Restore pottery with L18450 and L18501.

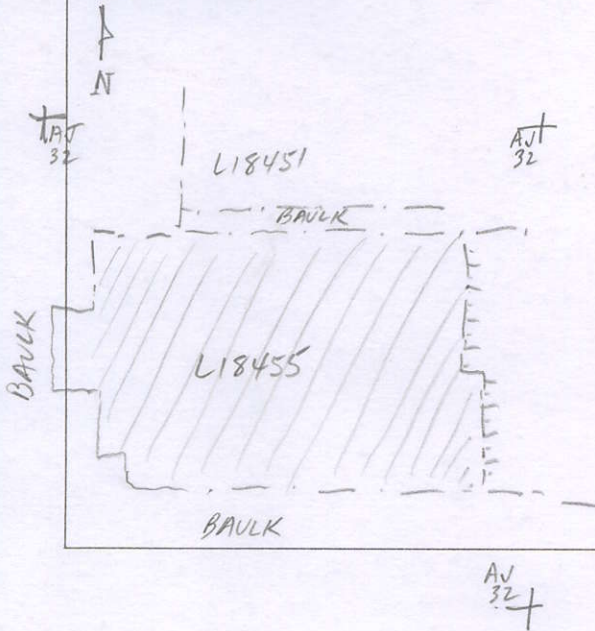
**Importance:** High value. For pottery and bone assemblage. Phase 10 assemblage sent for restoration with L18450 and L18501

| Images | L 18455  | Related loci: | Features |
|--------|----------|---------------|----------|
|        | is_above | 18501         |          |
|        | is_below | 18450         |          |

Locus

LJ 1845.5

Sketch plan



Photo

Photo

Section

Section

