

Locus Card

DOR 2000

L 18458 *Area* G *Sq:* AI-AJ/33- *Loc. type:* Pit
High at Low at *written by:* WSB created 29/07/2000
Open 19/07/2000 11.82 n 11.73 w *checked by:* EBS updated: 11/08/2000
Close 21/07/2000 11.57 e 11.50 w **Floor** 0.00
Length 0.72 width: 0.58 volume: Floor type (old)
Removed: 21/07/2000 Drawn? No

Integrity:

s

unit: Hor. 3 *phase:* 11? *stage:* xii? *stratum:* *PoM:*

summary:

Opened: Pit outline and clean sand fill clearly visible.

Limits (N)

(S)

(E)

(W)

Closed: Pit fully excavated.

Matrix: Pit edge perhaps partially lined with dark reddish-brown matrix; clean light yellow sand fills the pit.

Relations: Cut from surface of L18453. Cobbles beneath the sand likely beneath the pit.

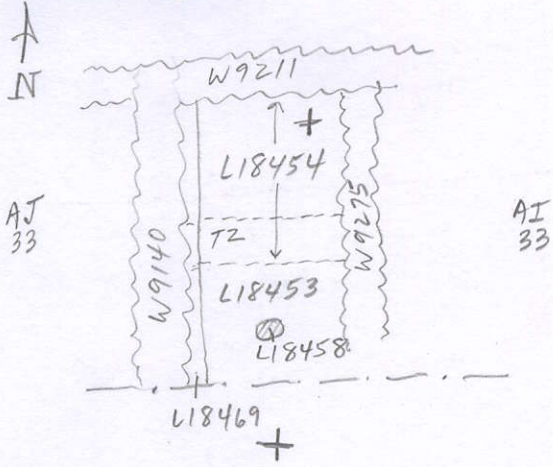
Importance: Low value - small pit with limited finds. Iron Ia pottery.

Images	L 18458	Related loci:	Features
	is_above	18487	
	is_below	18438	
	sealed_by	18443	

Locus

L 18458

Sketch plan



Photo

Photo

Section

Section