

# Locus Card

DOR 2000

L 18460      *Area* G      *Sq:* AI- /31-      *Loc. type:* Sand lense / filled  
High at Low at      *written by:* WSB      created 29/07/2000  
Open 19/07/2000 11.07 w 10.86 e      *checked by:* EBS      updated: 11/08/2000  
Close 21/07/2000 10.76 n 10.64 ne      **Floor** 10.76 n 10.64 ne  
Length 2.38 width: 0.76 volume:      Floor type (old)  
Removed: 21/07/2000      Drawn? No

c

Integrity:

u

*unit:* Hor. 3      *phase:* 11b

*stage:* xvi

*stratum:*

*PoM:*

*summary:*

**Opened:** Upon remaining L18447 above, 2 loci were apparent in the southern extent, the sand lense L18460 and a continuation of the L18447 matrix now designated L18465.

**Limits (N)** L18465

(S) 1999 test trench (L19414 at bottom).

(E) L18402 (1999)

(W) Baulk under Roman cardo (L9000).

**Closed:** Sand lense / pit removed.

**Matrix:** Clean, light brown sand.

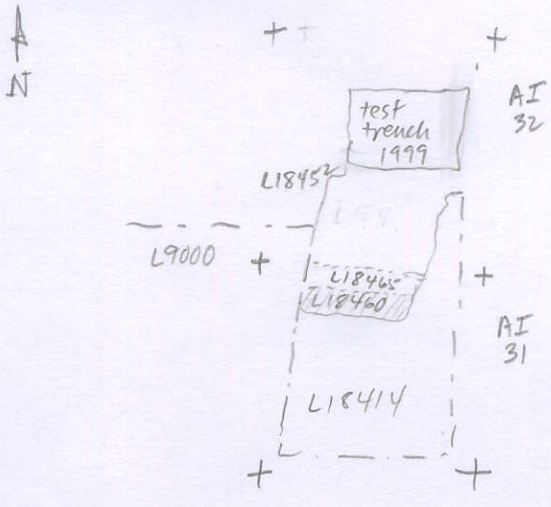
**Relations:** L18447 covered L18460 to the S and L18465 to the N. L18447 is the same matrix as L18465. L18460 is either a sand lense in the multiple layers sloping down towards the S, or a sand-filled depression in the build-up. (See section drawing for L18447).

**Importance:** Low value - limited extent sand lense. Transitional LB / IA pottery

Images	L 18460	Related loci:	Features
d03Z3-3125	is_above	18467	
d03Z3-3024	is_below	18447	
d03Z3-3084	sealed_by	18437	

Locus  
L 18460

Sketch plan



Photo

Photo

Section

Section

