

Locus Card

DOR 2000

L 18464 *Area* G *Sq:* AJ- /32- *Loc. type:* Pit
High at Low at *written by:* WSB created 29/07/2000
Open 19/07/2000 11.25 w 11.05 e *checked by:* EBS updated: 11/08/2000
Close 21/07/2000 10.88 n 10.88 s **Floor** 0.00
Length 0.60 width: 0.70 volume: Floor type (old)
Removed: 21/07/2000 Drawn? Yes

Integrity:

u

unit: Hor. 3 *phase:* 11 *stage:* xiv *stratum:* *PoM:*
summary:

Opened: Pit edges discernible at top of L18452 (multiple surface accumulation).

Limits (N)

(S)

(E)

(W)

Closed: Pit contents removed.

Matrix: Mixed brown-grey matrix with charcoal flecks.

Relations: After L18445 was removed, the top of the pit was discernable in the new matrix of L18252. In contradistinction to pit L18458 filled with clean sand, this pit, like pit L18461 to the N, was filled with a heterogeneous matrix with charcoal flecks throughout.

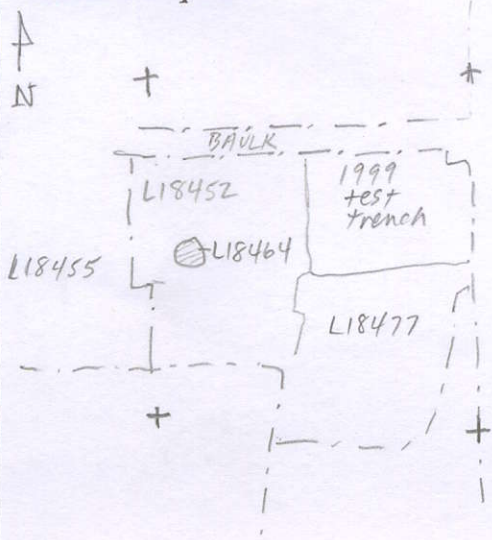
Importance: Low value - small pit with limited pottery. LB/IA pottery.

Images	L 18464	Related loci:	Features
	is_below	18445	
	is_above	18489	
	sealed_by	18452	

Locus

L 18464

Sketch plan



Photo

Photo

Section

Section

