

Locus Card

DOR 2000

L 18465 *Area* G *Sq:* AI- /31-32 *Loc. type:* Multiple surface
High at Low at *written by:* WSB created 29/07/2000
Open 21/07/2000 10.97 n 10.77 s *checked by:* EBS updated: 11/08/2000
Close 21/07/2000 10.79 n 10.75 s **Floor** 10.97 n 10.75 s
Length 2.50 width: 0.70 volume: Floor type (old)
Removed: 21/07/2000 Drawn? No

c

Integrity:

u

unit: Hor. 3 *phase:* 11b

stage: xvi

stratum:

PoM:

summary:

Opened: While removing L18447 above the sand lense L18460 was delineated along the S edge of the "plateau" requiring a new # for the continuation down of the L18447 matrix.

Limits (N) L18446 (sealed portion of MSA)

(S) L18460 (sand lense/pit)

(E) L18402 ('99)

(W) Baulk under Roman cardo L9000

Closed: MSA of L18465 came down upon a thick plaster surface L18467, the bottom of the MSA in AI31.

Matrix: Successive layering of ashy grey matrix, dark brown matrix, thin clean sand lenses, thin brown clay layers, and thick burnt layers.

Relations: Layers in L18447, L18446 and 18465 all slope down to the S. The L18460 sand lense or fill in a shallow depression sits relatively flat. See section drawing on L18447 card.

L18467 is a continuation of the L18447 matrix.

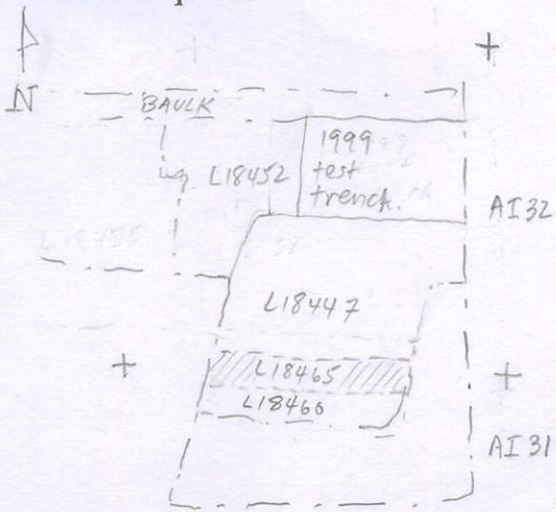
Importance: Low value - limited extent with little pottery. (MB and LB!)

Images	L 18465	Related loci:	Features
	is_above	18467	
	is_below	18447	
	sealed_by	18437	

Locus

L 18465

Sketch plan



Photo

Photo

Section

see card
for L18447

Section