

Locus Card

DOR 2000

L 18467 *Area* G *Sq:* AI- /31-32 *Loc. type:* Thick plastered surface
High at Low at *written by:* WSB created 29/07/2000
Open 24/07/2000 10.74 ne 10.52 s *checked by:* EBS updated: 11/08/2000
Close 25/07/2000 10.63 n 10.52 s **Floor**
Length 2.40 width: 1.40 volume: Floor type (old)
Removed: 25/07/2000 Drawn? No

Integrity:

u

unit: Hor. 3 *phase:* 11b *stage:* xvi *stratum:* *PoM:*
summary:

Opened: The earliest plaster surface of the extensive multiple surface accumulation.

Limits (N) Unexcavated

(S) 1999 trench with L18414 at the bottom.

(E) Pit L18402 ('99)

(W) Baulk under Roman cardo L9000.

Closed: Plaster surface removed.

Matrix: Dark-brown clay adhering to broken-up, thick plastered surface (3-5cm thick).

Relations: While the clay is not part of the surface make-up, time was not devoted to scraping away the clay. This surface did not extend over the entire vicinity, it was limited to a lower step (see section drawing). This isolated patch of surface make-up is similar to another earliest such surface visible in the 1999 test trench's N section.

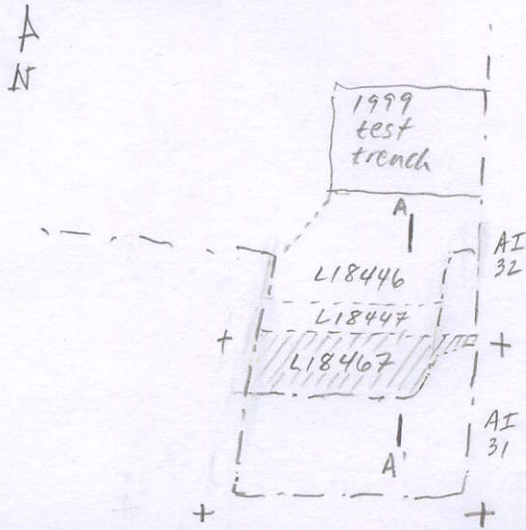
- Part of the earliest Phase 11 multiple surfaces: L18467 - L18447 = L18446 = L18483 - L18489 - L18496 - L18405 ('99). See early Phase 11 plan.

Importance: High value - portion of lowest Ph. 11 continuous surface make-up, transitional LB/Iron I pottery.

Images	L 18467	Related loci:	Features
	is_below	18460	
	sealed_by	18437	
	is_below	18447	
	is_below	18465	

Locus
L 18467

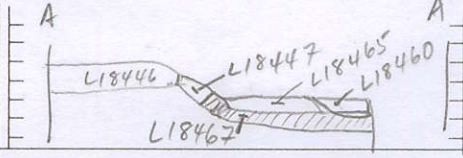
Sketch plan



Photo

Photo

Section



Section

LOOKING EAST