

Locus Card

DOR 2000

L 18475 *Area* G *Sq:* AJ- /32- *Loc. type:* Confounding matrix
High at Low at *written by:* WSB created 11/08/2000
Open 25/07/2000 11.36 n 11.24 s *checked by:* EBS updated: 11/08/2000
Close 25/07/2000 11.32 n 11.21 se **Floor**
Length 2.40 width: 1.10 volume: Floor type (old)
Removed: 25/07/2000 Drawn? No

Integrity:

u

unit: Hor. 3 *phase:* 11b *stage:* xii *stratum:* *PoM:*
summary:

Opened: To elucidate loci below.

Limits (N) L18470 (shell floor bedded installation)

(S) L18455 sand and mud lenses

(E) Drop in elevation from 1999 excavation.

(W) L18455 sand and mud lenses.

Closed: When loci below were clarified.

Matrix: Reddish-brown and grey patches, sand lenses.

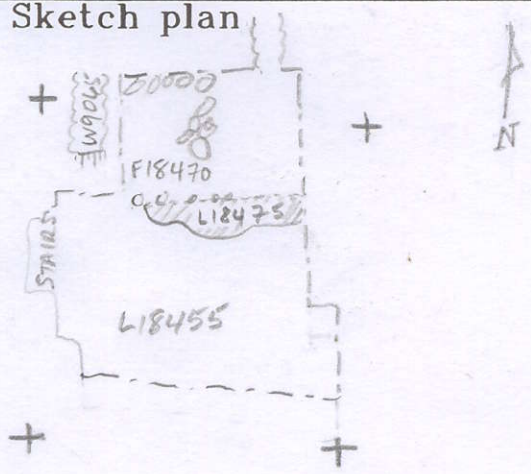
Relations: L18450 above was an enigmatic locus removed to clarify what lay below. Below L18450 lay a higher, more coimpact matrix in the N (L18475) and sand-mud lenses to the S and W (L18455). L18475 was necessary to clarify the compact matrix - only with digging were two separate matrices distinguished.

Importance: Low value - limited extend, disturbed/confounding matrix.

Images	L 18475	Related loci:	Features
	is_above	18485	
	is_below	18450	
	is_above	18497	

Locus
L 18475

Sketch plan



Photo

Photo

Section

Section

