

# Locus Card

DOR 2000

L 18476      *Area* G      *Sq:* AI- /33-      *Loc. type:* Foundation trench for  
High at Low at      *written by:* WSB      created 12/08/2000  
Open 26/07/2000 13.30 s 13.14 e      *checked by:* EBS      updated: 12/08/2000  
Close 27/07/2000 13.23 s 12.97 n      **Floor**  
Length 3.00 width: 0.74 volume:      Floor type (old)  
Removed: 27/07/2000      Drawn? No

Integrity:

s  
*unit:* ---      *phase:* 8      *stage:* <iii      *stratum:*      *PoM:*  
*summary:*

**Opened:** After removing the stones of W9275 above, it was clear that a second wall (W18481) lay below on a slightly more NW-SE orientation. L18476 removed to delineate stones of W18481 below.

**Limits (N)** W9211

(S) Determined by extent of W9275 above and pedestalled remains of L18476.

(E) Determined by extent of W9275 above and pedestalled remains of L18476.

(W) Determined by extent of W9275 above and pedestalled remains of L18476.

**Closed:** FT matrix removed and new wall (W18481) revealed below.

**Matrix:** Dark reddish-brown matrix -used for mudbricks and identified in the area as mudbrick detritus or melt (eg. L18466, L18462).

**Relations:** This Ft for a long-time floating wall is labelled "?d" possibly disturbed as it has been exposed to the elements, flora, and fauna for an extended period.

- The reddish-brown matrix used to pack the FT was also used between successive resurfacings of the threshold below (L18482).

**Importance:** High value - FT exposed over extended period, but helps date wall W9275.

Images	L 18476	Related loci:	Features
	is_above	18482	
	is_below	9275	
	sealed_by	9275	
	is_above	18481	



ocus L18476	Dor <sup>20</sup> 0.0	Fld G	Sq AI33	Loc. type Foundation trench for W9275 <sup>9275</sup>
Date Open 2.6.10.71 0.0 Close 2.7.10.71 0.0	High at 1.3.8.10 S	at	Low at 1.3.14 E	Seals: _____ Sealed by: W9275
Floor: type _____	Length 3.0	Width 2.74	Vol. _____	Loci W9275 above _____
Value ?d	Remove 2.7.10.71 0.0	Drawn? N/A		Loci 18482 W18481 below _____
Photo #(1) _____	Photo #(2) _____			
Written by: WSB	Checked by: EBS			

Unit _____	Phase _____	Stage _____	Stratum _____	PoM _____
------------	-------------	-------------	---------------	-----------

Summary \_\_\_\_\_

Opened: after removing the stone of W9275 above, it was clear that a second wall (W18481) lay below on a slightly more NW-SE orientation. L18476 removed to delineate stone of W18481 below

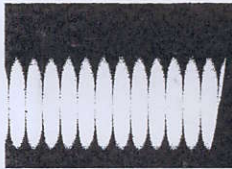
Limits (N) W9211  
 (S) \_\_\_\_\_  
 (E) } determined by extent of W9275 above + pedestalled remains of L18476.  
 (W) }

Closed: FT matrix removed + new wall (W18481) revealed below.

Matrix: dark reddish-brown matrix - used for mudbricks + identified in the area as mudbrick detritus or melt (eg L18466, L18462).

Relations: this FT for a long-time floating wall is labelled "?d" possibly disturbed as it has been exposed to the elements, flora + fauna for an extended period.  
 - The reddish-brown matrix used to pack the FT was also used between successive resurfacing of the threshold below (L18482).

Additional Observations/Value: high value - FT exposed over extended period, but helps date wall W9275.

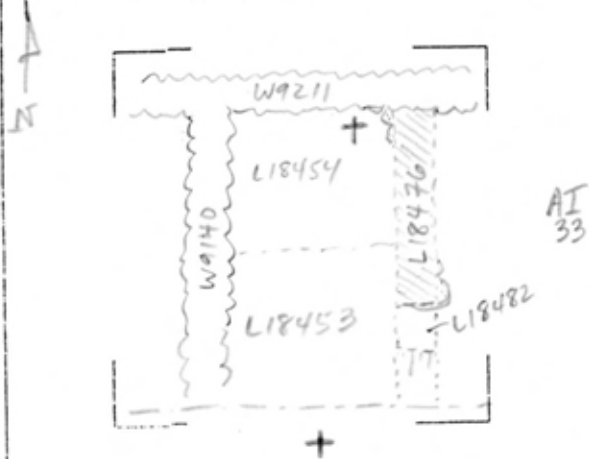




LOCUS

L 18476

Sketch plan



Photo

Photo

Section

Section