

Locus Card

DOR 2000

L 18478 *Area* G *Sq:* AJ- /32-33 *Loc. type:* Floor make-up of shells.
High at Low at *written by:* WSB created 12/08/2000
Open 26/07/2000 11.59 ne 11.33 sw *checked by:* ESB updated: 13/08/2000
Close 31/07/2000 11.49 nw 11.26 s **Floor**
Length 2.70 width: 1.96 volume: Floor type (old)
Removed: 31/07/2000 Drawn? Yes

Integrity:

i

unit: Hor. 3 *phase:* 11b *stage:* xi *stratum:* *PoM:*
summary:

Opened: Shells exposed over extended area

Limits (N) W18463

(S) L18455, L18501, L18450

(E) sectio excavated in 1999

(W) baulk under W9065

Closed: Shells removed.

Matrix: Layer of glycimerus(?) shells ranging in depth from 2-10 cm.

Relations: Though no surface/flooring remained from F18470, the shell-bedding preserved the contours of the installation. Wall W18463 formed the northern border of the exposed extent of the installation. Stones

W18471 formed the eastern edge of an upper, rough-rectangular unit. Shell bedding sloped down from the upper unit to a larger, lower SHALLOW basin(?), its southern extent formed by an E-W row of small stones. In a well-preserved section of the basin side, the small stones were covered with dirt, against which was set a vertical line of shells faced with a clean matrix covered with plaster (see SW corner section drawing). Distinctive edges with vertical facings of sherds were preserved in the S and E. A patch of shells was preserved above the plaster floor L18472. E of stones W18471 shells were preserved in patches - a clump above the plaster floor L18472, and a curb in the SE. See section drawings.

- Shells were not burned, crushed or in any way manipulated to provide a clue to their function in installation L18470.

- A small, possible patch of surface or use (L18451) was preserved above the shells. Ash and charcoal distinguished this patch from the surrounding matrix. No comparable patches were identified suggesting the ash and charcoal were present in the mudbrick melt (L18451) rather than preserved flooring.

Shells were first uncovered in the form of a shell heap described in L18439 (elevation 11.70m).

Shells followed the contours of the stones of wall W18463 and may continue under some of the stones of W18471.

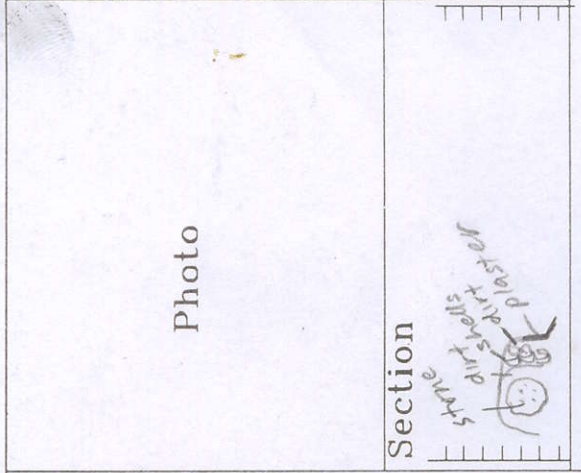
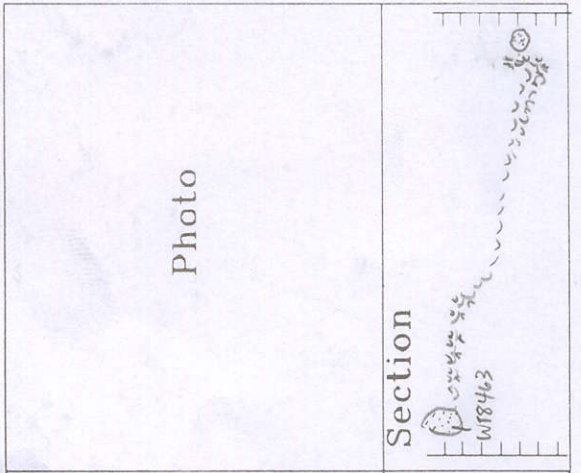
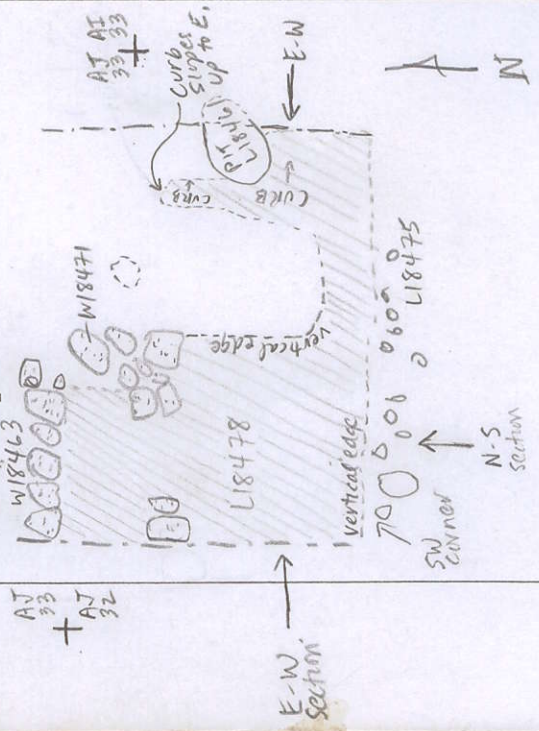
See L18470 for further comments regarding the shells. Shells in the alleged robber trenches L18505 and L18529 suggest shells and stones laid contemporaneously (see note on L18470).

Importance: High value - LB/Iron Ia enigmatic installation.

Images	L 18478	Related loci:	Features
d03Z3-3026	is_above	18488	
d03Z3-3015	is_below	18470	
	sealed_by	18470	
	Seals	18488	
	seals	18505	
	is_above	18497	

Locus
 L 18478

Sketch plan



N-S section
 E-W section

SW corner section