

Locus Card

DOR 2000

L 18479 *Area* G *Sq:* AI- /32- *Loc. type:* Stone fall in pit and fill.
High at Low at *written by:* WSB created 12/08/2000
Open 26/07/2000 10.00 n 9.96 sw *checked by:* EBS updated: 12/08/2000
Close 27/07/2000 9.90 n 9.75 nw **Floor**
Length 2.40 width: 1.95 volume: Floor type (old)
Removed: 27/07/2000 Drawn? No

Integrity:

u

unit: --- *phase:* 12 *stage:* xv *stratum:* *PoM:*
summary:

Opened: Locus immediately below cleaning locus L18477 and baulk trim L18474.

Limits (N) Extent of 1999 test trench.

(S) Extent of 1999 test trench.

(E) Extent of 1999 test trench.

(W) Extent of 1999 test trench.

Closed: Possible metallurgical installation exposed.

Matrix: Brown matrix with sand lenses, charcoal, bits of burned brick and field stones scattered through the northern extent. Matrix more sandy in western and southern extent.

Relations: This is a continuation of L18420, which was not completed at the end of the 1999 season. L18420 (1999) = L18477 (cleaning) = L18497 = L18484. All of these loci combine flat lying fill layers to the S with dumped material to the N. All of the burning, charcoal and metallurgical deposits are from the northern dump. N and S subsequently separated into two loci, here the matrices are combined.

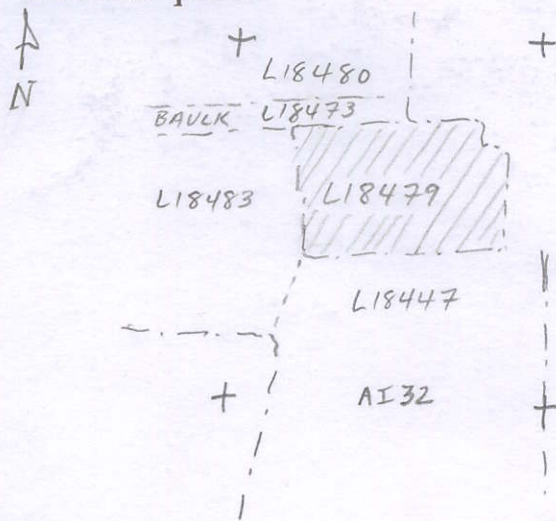
Importance: Medium value - mixed matrices (dump/pit and fill).

Images	L 18479	Related loci:	Features
d08Z3-3006	is_above	18484	
	is_below	18477	
	is_below	18474	

Locus

L 18479

Sketch plan



Photo

Photo

Section

Section