

Locus Card

DOR 2000

L 18483 *Area* G *Sq:* AI-AJ/32- *Loc. type:* Multiple surface
High at Low at *written by:* WSB created 12/08/2000
Open 27/07/2000 11.00 n 10.90 s *checked by:* EBS updated: 15/01/2015
Close 01/08/2000 10.82 w 10.77 e **Floor** 10.82 w 10.77 e
Length 3.05 width: 2.40 volume: Floor type (old)
Removed: 01/08/2000 Drawn? No

c

Integrity:

u

unit: Hor. 3 *phase:* 11

stage: xiv

stratum:

PoM:

summary:

Opened: Below surface of fl18452.

Limits (N) Baulk.

(S) Baulk under Roman cardo

(E) 1999 test trench, L18446

(W) Baulk

Closed: Reached clean, sandy fill layer below.

Matrix: Carbonized, ashy, sand, clay and dark brown accumulated surfaces.

Relations: As was the case with L18453 and L18454, the clean brown layers of L18489 lensed into the burned and ashy lenses with no discernable divide. The sloping burned layers appear to have been dumped down the slope from the relatively flat and clean sandy brown layers. No physical divide between L18489 (unsealed deposit below L18452) and L18483 (sealed by F18452).

L18489 - L18483 = L18446 = L18447 - L18460 - L18465 - L18467 - L18496 - L18405 (1999):

This is the earliest continuous surface of the build up of Phase 11 outdoor industrial surfaces.

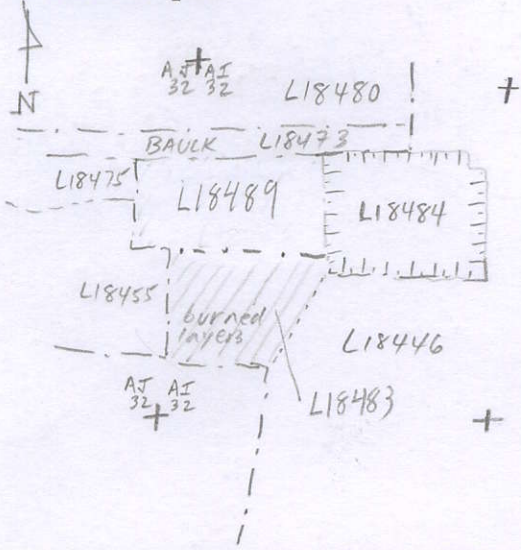
Importance: High value - for determining relationship of clean brown deposits to ashy and burned deposits, portion of earliest Phase 11 multiple surface accumulation. LB pottery.

Images	L 18483	Related loci:	Features
d05Z3-0094	is_above	18489	
p09X-2404	is_below	18452	
p09X-2405	sealed_by	18452	
p09X-2406			
d03Z3-3082			
d03Z3-3129			
d03Z3-3086			
d03Z3-3022			
d03Z3-3018			
p10Z3-0112			

Locus

L 18483

Sketch plan



Photo

Photo

Section

Section

