

# Locus Card

DOR 2000

L 18485      *Area* G      *Sq:* AJ- /32-      *Loc. type:* fill  
High at Low at      *written by:* WBS      created 12/08/2000  
Open 31/07/2000 11.52 w 11.49 e      *checked by:* EBS      updated: 12/08/2000  
Close 03/08/2000 11.31 e 11.30 w      **Floor**  
Length 1.00 width: 0.70 volume:      Floor type (old)  
Removed:      Drawn? No

Integrity:

u

*unit:* Hor. 1      *phase:* 11b      *stage:* xii      *stratum:*      *PoM:*  
*summary:*

**Opened:** Searching for continuation of L18478 to the south.

**Limits (N)** L18478 - shell bedding

(S) L18455 sand and mud lenses

(E) plaster

(W) L18455 sand and mud lenses

**Closed:** Matrix of L18501 (to the S) reached below.

**Matrix:** Compact clean brown sandy matrix.

**Relations:** L18485 appears to lie above L18501. The semi-circular locus is ringed by small fieldstones. This locus is unlike the matrix to the N, S or E (W currently under the staircase). It has a distinctive matrix and shape, but eludes interpretation.

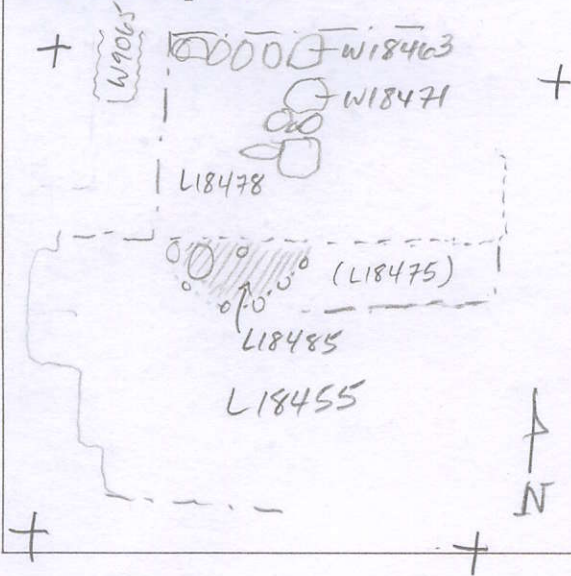
**Importance:** Low value - small locus with "limited" finds. LB pottery.

Images	L 18485	Related loci:	Features
	is_above	18501	
	is_below	18475	

Locus

L 18485

Sketch plan



Photo

Photo

Section

Section

