

Locus Card

DOR 2000

L 18486 *Area* G *Sq:* AI-AJ/33-34 *Loc. type:* outdoor deposit
High at Low at *written by:* wbs created 12/08/2000
Open 31/07/2000 11.81 nw 11.81 s *checked by:* ebs updated: 12/08/2000
Close 09/08/2000 11.45 nw 11.42 se **Floor**
Length 2.00 width: 1.95 volume: Floor type (old)
Removed: 09/08/2000 Drawn? No

Integrity:

s

unit: Hor. 2 *phase:* 12? / 11?? *stage:* xiii *stratum:* *PoM:*
summary:

Opened: Opened new locus below L18453 to the S, and this locus incorporates the greater extent of this matrix below L18454.

Limits (N) baulk under W9211

(S) L18487

(E) baulk under W18481

(W) baulk under W9140

Closed: L18510 and L18511 were opened below as a new significant surface and greater extent of clean sandy brown matrix respectively.

Matrix: Clean brown sandy matrix with sand lenses and few small sherds.

Relations: L18486 blends into L18487 to the south. Excavation of L18453 and L18454 above and the 'twilight zone' between them demonstrated that the sloping surfaces of L18453 appeared to have been dumped from the clean, flat L18454. The sloping L18487 is likely also dumped from L18486. Therefore no TZ has been left between them.

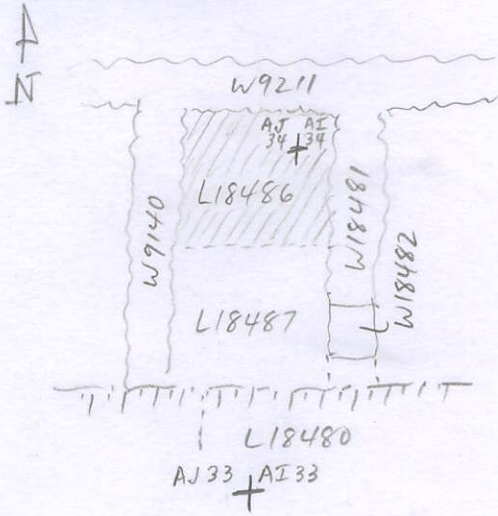
Importance: Low value - limited extent with limited finds. LB pottery with few MB sherds.

Images	L 18486	Related loci:	Features
d03Z3-3064	is_above	18510	
	is_below	18454	
	is_below	18469	
	is_below	18453	

Locus

L 18486

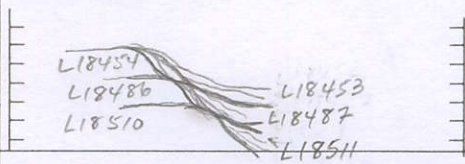
Sketch plan



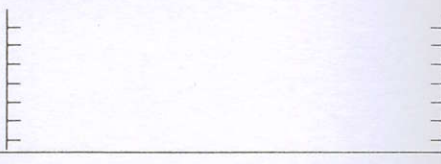
Photo

Photo

Section



Section



East bank under
W18481.