

Locus Card

DOR 2000

L 18488 *Area* G *Sq:* AJ- /32-33 *Loc. type:* multiple surface
High at Low at *written by:* WSB created 12/08/2000
Open 31/07/2000 11.49 nw 11.26 s *checked by:* EBS updated: 13/08/2000
Close 07/08/2000 11.49 ne 11.21 s **Floor**
Length 1.90 width: 1.10 volume: Floor type (old)
Removed: 07/08/2000 Drawn? No

Integrity:

u

unit: Hor. 2 *phase:* 12? *stage:* xiii *stratum:* *PoM:*
summary:

Opened: Matrix below the shell-bedding L18478

Limits (N) W18463

(S) L18475 and E-W stone line

(E) W18471 and robber trench L18505

(W) baulk under W9065

Closed: New locus opened in continuing matrix below due to increased extent (below W18471 and include RT L18505).

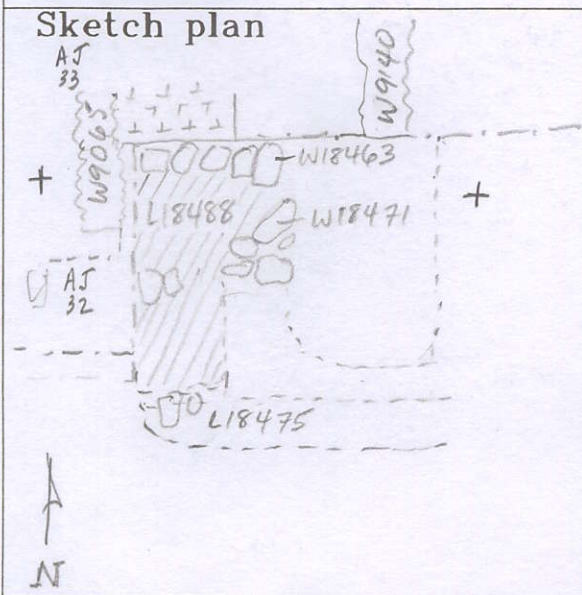
Matrix: Layers and lenses of brown dirt and sand, a thick ashy matrix with charcoal flecks (5-8 cm deep), and ephemeral plaster/ash lenses.

Relations: L18488 is the multiple surface accumulation W of wall W18471 and robber trench L18505. It slopes down dramatically to the west.

Importance: Medium value - limited extent but transitional LB/IA pottery.

Images	L 18488	Related loci:	Features
	is_above	18506	
	is_below	18478	
	sealed_by	18478	
	Seals	18506	
	is_below	18463	

Locus
L 18488



Photo

Photo

Section

Section