

Locus Card

DOR 2000

L 18493 *Area* G *Sq:* AI- /32- *Loc. type:* outdoor deposit
High at Low at *written by:* WSB created 12/08/2000
Open 02/08/2000 11.12 e 10.90 w *checked by:* ESB updated: 12/08/2000
Close 02/08/2000 10.90 e 10.79 se **Floor**
Length 2.70 width: 0.60 volume: Floor type (old)
Removed: 02/08/2000 Drawn? No

Integrity:

u

unit: Hor. 3 *phase:* 11 *stage:* xiv *stratum:* *PoM:*
summary:

Opened: Fill matrix below the Pase11 multiple surfaces.

Limits (N) test trench.

(S) L18447

(E) L18468

(W) baulk under Roman cardo L9000.

Closed: Pedestal of matrix removed as L18493, L18494 assigned to greater extent.

Matrix: Sandy fill with horizontal sandy lenses, likely an outdoor deposit.

Relations: L18493 (pedestal)=L18494 (over greater extent). =L18420 (1999 test trench). Pottery included many tiny erode pieces and green patina covered sherds.

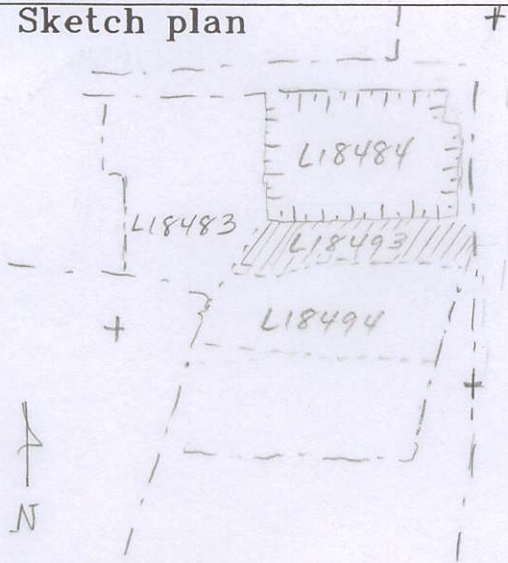
Importance: Medium value - part of L18493 - L18494 LB matrix which was sifted.

Images	L 18493	Related loci:	Features
	is_above	18494	
	is_below	18446	

Locus

418493

Sketch plan



Photo

Photo

Section

Section

