

Locus Card

DOR 2000

L 18499 *Area* G *Sq:* AI-AJ/32- *Loc. type:* baulk removal - MSA
High at Low at *written by:* WSB created 12/08/2000
Open 04/08/2000 11.48 e 11.31 w *checked by:* ESB updated: 12/08/2000
Close 04/08/2000 11.25 sw 11.17 w **Floor**
Length 2.40 width: 0.50 volume: Floor type (old)
Removed: 04/08/2000 Drawn? No

Integrity:

s

unit: Hor. 3 *phase:* 11 *stage:* xiv *stratum:* *PoM:*
summary:

Opened: High baulk impede progress, therefor it was lowered.

Limits (N) standing baulk

(S) standing baulk

(E) standing baulk

(W) L18497

Closed: Slow digging pace unstoppable and unwarranted, so digging ceased.

Matrix: Layers and lenses of lighth brown sandy soil, an ashy matrix, sandy and ephemeral plaster.

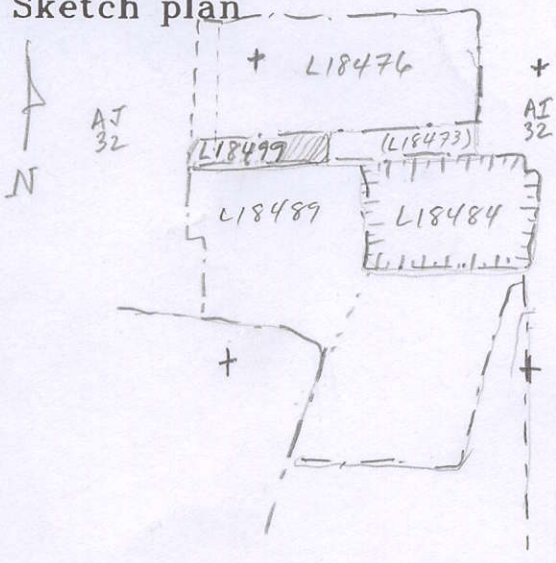
Relations: Loci approximately at the same elevation N and S of L18499 are L18444 to the N, L18436 and L18455 to the S.

Importance: Low value - baulk removal.

Images	L 18499	Related loci:	Features
	is_below	18473	
	is_below	18497	

Locus
L 18499

Sketch plan



Photo

Photo

Section

Section

