

Locus Card

DOR 2000

L 18500 *Area* G *Sq:* AI- /32- *Loc. type:* Outdoor deposit
High at Low at *written by:* WSB created 13/08/2000
Open 04/08/2000 9.41 s 9.35 e *checked by:* EBS updated: 16/08/2000
Close 14/08/2000 8.23 e 8.20 w **Floor**
Length 2.10 width: 0.70 volume: Floor type (old)
Removed: 14/08/2000 Drawn? No

Integrity:

u

unit: Hor. 1 *phase:* 12 *stage:* xv *stratum:* *PoM:*
summary:

Opened: 2 distinct loci were discerned within L18484 - dump L18498 to the N and the outdoor deposit L18500 to the S.

Limits (N) L18498

(S) Extent of 1999 test trench. Beginning 10/08/00 eastern 50 cm relegated to stairway down into the trench.

(E) Extent of 1999 test trench.

(W) Extent of 1999 test trench.

Closed:

Matrix: Horizontal lenses of sandy matrix with gravel throughout.

Relations: L18484 above mixed L18498 (N) and L18500 (S). Both are outdoor deposits. L18500 lies horizontal while L184898 was clearly dumped down into depression / pit to the N. The matrix become s progressively sandier as it descends.

L18500 also creeps northward until at an elevation of 8.22m it replaced L18498 completely and covered the whole test trench.

The opening elevations cited are from the point at which we differentiated L18498 from L18500. As visible in the section drawing, the top of the L18500 matrix was closer to 10.20m in the SE corner.

Importance: Med value - LB outdoor matrix.

Images	L 18500	Related loci:	Features
p05Z3-0638	is_below	18484	
d08Z3-3006			
d03Z3-3072			
d03Z3-3075			
d03Z3-3076			

193465



193466



193467



193469



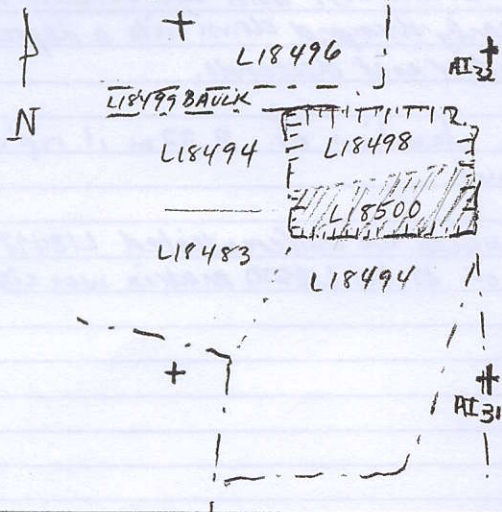
193468



Locus

L 18500

Sketch plan



193470A



Photo

ction

193470

