

Locus Card

DOR 2000

L 18504 *Area* G *Sq:* AI- /33-34 *Loc. type:* ash layer part of tub make-up
High at Low at *written by:* WBS created 15/08/2000
Open 07/08/2000 12.98 se 12.87 nw *checked by:* EBS updated: 15/08/2000
Close 07/08/2000 12.89 e 12.82 nw **Floor**
Length 2.10 width: 1.60 volume: Floor type (old)
Removed: 07/08/2000 Drawn? No

Integrity:

s

unit: 9928 *phase:* 10a/9b?? *stage:* x/xi? *stratum:* *PoM:*
summary:

Opened: distinct ash layer and crushed kurkar layer in floor make-up of L18495 (=FL9928 "Raubir's tub")

Limits (N) W9211

(S) w9961

(E) W9684

(W) W18481

Closed: Ash layer removed. Top of W18515 uncovered

Matrix: Grey, ashy matrix

Relations: The ashy layer formed the bottom layer of the floor make-up under L18495 (FL9928). It was the basis on which the crushed kurkar layer was spread and reached all 4 surrounding walls of the tub. However the rising edge of the tub was constructed with crushed kurkar.

-L18504 covered the top of W18515

See note on card L18507

Importance: high value- part of phase 9 tub-installation. F9928

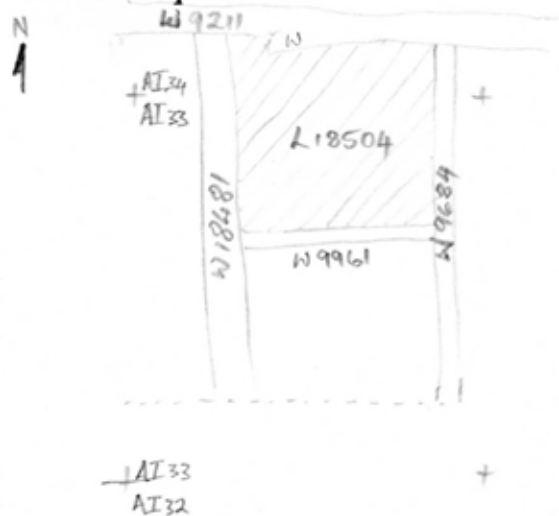
Images	L 18504	Related loci:	Features
	is_above	18507	
	is_below	18495	
	sealed_by	18495	
	is_above	1851	
	is_above	18508	

Locus L1 18504	Dor 20 00	Fld 91	Sq A.I. 33, 34	Loc. type Ash layer, part of tub make-up
Open Date 0.7/08/00	High at 12.98 S.E.	Low at 12.87 N.W.	Seals: _____	Sealed by: 18495
Close Date 0.7/08/00	12.89 E.	12.82 N.W.	Seals: _____	Sealed by: _____
Floor: type _____	Length 2.10	Width 1.60	Vol _____	Loci 18495
Value S.E.	Remove 0.7/08/00	Drawn? No	Seals: _____	above _____
Photo #(1) _____	Photo #(2) _____	Loci 18507	18508	18515
Written by: H.S.B.	Checked by: E.B.S.	below 18522	18520	18525
Unit _____	Phase _____	Stage _____	Stratum _____	PoM _____
Summary _____				
Opened: Distinct ash layer under crushed kurkar layer in floor make up of L18495 (= FL 9928 Rankin's tub)				
Limits (N) W 9211 and W _____				
(S) W 9961				
(E) W 9684				
(W) W 18481				
Closed: Ash layer removed. Top of N18515 uncovered.				
Matrix: Gray, ashy matrix				
Relations: The ashy layer formed the bottom layer of the floor make-up under L18495 (FL 9928). It was the basis on which the crushed kurkar ^{type} was spread and reached all four surrounding walls of the tub. However, the rising edge of the tub was constructed with crushed kurkar.				
- L18504 covered the top of N18515				
see note on card L18507				
Additional Observations/Value: High value - Part of Phase 9 ^{tub-} installation. F9928.				

Locus

L 18504

Sketch plan



Photo

Photo

Section

See L 18495

Section