

Locus Card

DOR 2000

L 18512 *Area* G *Sq:* AI- /33- *Loc. type:* flooring occupational debris
High at Low at *written by:* WSB created 15/08/2000
Open 09/08/2000 12.91 e 12.88 n *checked by:* EBS updated: 15/08/2000
Close 09/08/2000 12.89 nw 12.85 s **Floor** 12.89 12.85
Length 0.70 width: 0.55 volume: Floor type (old)
Removed: 09/08/2000 Drawn? No

e

Integrity:

u

unit: 18313 *phase:* 10b

stage: xii

stratum:

PoM:

summary:

Opened: To establish relationship of floors visible in baulk to walls W18515 and W18514 at their corner

Limits (N) unexcavated to the N

(S) material excavated previously

(E) FT18587 for W18515

(W) probe to expose stones of W18503

Closed: establish relationship between floors L18512 and W18515

Matrix: thin lenses of sandy and ashy matrices

Relations: floors L18512 did not reach W18515 they were cut by the wall's foundation trench L18527. For phase 10 subphases see W18503 card

Importance: high value-for determining Phase 10 subphased

Images

L 18512

Related loci:

Features

is_above

1850

is_below

18449

Seals

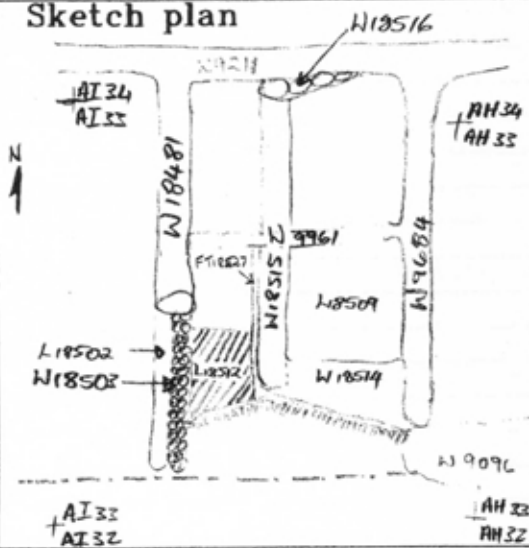
18503

Locus L1 18512		Dor 20 00	Fld C1	Sq A1 33 111	Loc. type floory occupational debris above
Open	Date 09/08/00	High at 12.91 E	Low at 12.88 N	Seals: 18503	_____
Close	09/08/00	12.89 NW	12.85 S	Sealed by:	_____
Floor: type	C1e	12.89	12.85	Loci 18449	_____
Length	0.70	Width 0.55	Vol	above	_____
Value	Remove 09/08/00	Drawn? No			_____
Photo #(1)		Photo #(2)		Loci W 18503	_____
Written by: W.B.		Checked by: E.B.S.		below	_____
Unit	Phase	Stage	Stratum	PoM	
Summary					
Opened: To establish relationship of floors visible in bank to walls W18515 and W18514 at their corner.					
Limits (N) Unexcavated					
(S) Material excavated previously					
(E) FT 2527 for W18515					
(W) probe to expose stores of W18503.					
Closed: establish relationship between floors L18512 and W18515.					
Matrix: thin lenses of sandy + ashy matrices					
Relations: floors L18512 did not reach W18515, they were cut by the wall's foundation trench L18527. For Ph 10 subphases see W18503 card.					
Additional Observations/Value: High value - for determining Ph. 10 subphases.					

Locus

LJ 18512

Sketch plan



Photo

Photo

Section

Section