

Locus Card

DOR

18513

Area G

Sq: AI-AJ/32-33

Loc. type:

High at Low at

written by:

created

0.00

checked by:

updated:

18/02/2003

Open

Close

Floor

Floor

0.00

Floor type (old)

Length

width:

volume:

Removed:

Drawn? No

Integrity:

u

unit: Hor. 3

phase: 11

stage: xiv

stratum:

PoM:

summary:

Opened:

Limits (N)

(S)

(E)

(W)

Closed:

Matrix:

Relations:

Importance:

Images

18513

Related loci:

Features

d08Z3-3000

p09Z3-6095

d09Z3-2030

Locus L 18513	Dor 20 00	Fld G ₁	Sq A11, A13, 21, 33	Loc. type Multiple surface accumulation
Open 0.9/08/00	High 10.83	at N ₁	Low 10.19	at NW
Close 1.1/08/00	High 10.82	at N ₁	Low 10.16	at SW
Floor: type	Width 1.38	Remove 1.1/0.8/0.0	Vol	Drawn? N ₁
Length 3.00	Remove 1.1/0.8/0.0	Drawn? N ₁	Loci 18496	above
Value 5.1	Remove 1.1/0.8/0.0	Drawn? N ₁	Loci	below
Photo # (1)	Photo # (2)	Loci	Loci	Loci
Written by: N.S.B.	Checked by: E.B.S.	Loci	Loci	Loci

Unit	Phase	Stage	Stratum	PoM
-------------	--------------	--------------	----------------	------------

Summary

Opened: Sloping multiple surfaces distinguished from compact dark-brown matrix towards the N and E. MSA excavated separately as L18513

Limits (N) Bank and L18521
 (S) Bank
 (E) Bank and L18521
 (W) Bank

Closed: End of excavations

Matrix: layers and lenses of brown dirt, ashy matrix with charcoal, sand and plaster.

Relations: This locus slopes down to the west. A division was made between this locus and the different, compact, dark-brown matrix of L18521.

Additional Observations/Value:

193439



193438



193464



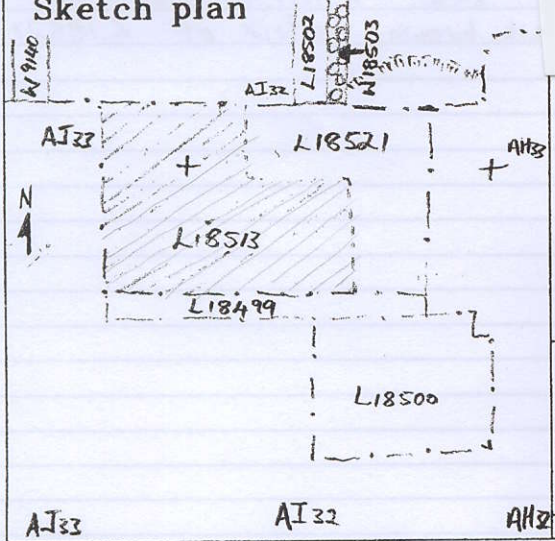
193450



Locus

L 18513

Sketch plan



193448



Photo

Section

