

Locus Card

DOR 2000

W 18514 *Area* G *Sq:* AI- /33- *Loc. type:* fieldstone wall
High at Low at *written by:* WSB created 16/08/2000
Open 10/08/2000 13.05 w 12.90 n *checked by:* EBS updated: 16/08/2000
Close 14/08/2000 13.05 w 12.95 n **Floor**
Length 1.10 width: 0.60 volume: Floor type (old)
Removed: Drawn? Yes

Integrity:

i

unit: -- *phase:* 10a *stage:* xi *stratum:* *PoM:*
summary:

Opened: Top of wall was uncovered during cleaning (L18449)

Limits (N) L18509

(S) baulk

(E) W9684

(W) L18512 cornered with W18515

Closed: not excavated at end of season.

Matrix: Fieldstones 20 -30 cm in diameter0

Relations: W18514, W18515 and W18516 form a southern, western and northern walls of a Phase 10 building which was partly covered by "tub installation" (L18415 - "Ranbir's tub").

FL18509 reaches W18514 in the SE corner the floor curves up against W18514

W18514 is bonded into W18515

See L18503 card for Phase 10 subphases

Importance: high value - for Phase 10 subphasing. Adds subphase to 10.

Images	W 18514	Related loci:	Features
p05Z3-0678	is_below	18449	
p05Z3-0679			

Locus W 18514	Dor 20 ⁰⁰	Fld G ₁	Sq AT 33	Loc. type fieldstone wall.
Open Date 10/18/00	High at 13.05 W	Low at 12.95 N	Seals: _____	_____
Close Date 14/08/00	13.05 N	12.95 N	Sealed by: _____	_____
Floor: type _____	Length L 1.10	Width 0.60	Vol _____	Loci 18449
Value in _____	Remove _____	Drawn? YES	above _____	_____
Photo #(1) _____	Photo #(2) _____	Loci _____	below _____	_____
Written by: W.S.B.	Checked by: E.B.S.	_____	_____	_____
Unit _____	Phase _____	Stage _____	Stratum _____	PoM _____

Summary

Opened: Top of wall was uncovered during cleaning (L18449).

Limits (N) L18509
 (S) Baulk
 (E) W 9684
 (W) L18512 + Corner with W18515.

Closed: not excavated at end of season.

Matrix: Fieldstones 20-30 cm diam.

Relations: W18514, W18515 and W18516 form the southern, western and northern walls of a Phase 10 building, which was partly covered by the "tub"-installation (L18495 - "Rambir's tub")
 F18509 reaches W18514. In the SE corner the floor curves up against W18514.
 W18514 is bonded into W18515.

see L18503 card for Ph.10 subphases.

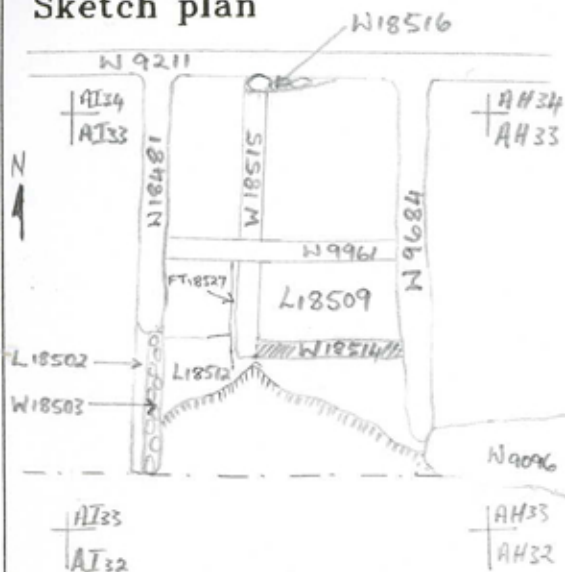
L18509 is FMU of F9971, F9971 reaches W18514

Additional Observations/Value: high value - for Ph.10 subphasing; Adds subphase to 10.

Locus

L 18514

Sketch plan



Photo

Photo

Section

Section

193474



193473



193476

