

# Locus Card

DOR 2000

W 18515      *Area* G      *Sq:* AI- /33-34      *Loc. type:* Fieldstone wall  
High at Low at      *written by:* WSB      created      16/08/2000  
Open 10/08/2000 13.03 sw 12.81 e      *checked by:* EBS      updated:      16/08/2000  
Close 14/08/2000 13.03 sw 12.08 e      **Floor**  
Length 3.25 width: 0.55 volume:      Floor type (old)  
Removed:      Drawn? Yes

Integrity:

i

*unit:* --      *phase:* 10a      *stage:* xi      *stratum:*      *PoM:*  
*summary:*

**Opened:** N section of wall W18515 uncovered when grey ashy layer of tub bedding L18504 was removed and S section uncovered during cleaning (L18449)

**Limits (N)** W18516

(S) corner with W18514, baulk

(E) FT18520, L18509

(W) FT18519, FT18527

**Closed:** not excavated at end of season

**Matrix:** fieldstones, large facing stones ( 20-30 cm in diameter, ) some very large stones (50 cm in diameter), center made up of small (10-15 cm) field stones

**Relations:** W18515 is bonded with W18514 in the S and with W18516 in the N. The top of W18515 ( N of W9961 ) was covered by the bedding of Ranbir's tub (L18504 and L18495)  
S of W9961 F118509 reaches W18515 on the W  
S of W9961 W18515 cuts into FL18512 ( see FT18527)  
N of W9961 W18515 cuts into L18507 ( see FT18519) and into L18508 ( see FT18520)  
W9961 is built on top of W18515. FT18522 to the N of W9961 cuts into W18515. The cavity left by the removed stones was filled with tub make-up, especially crushed kurkar ( cf L18495 and L18504).

See card for L18503 for Phase 10 subphases.

**Importance:** high value - part of Phase 10 building with associated floor

Images	W 18515	Related loci:	Features
p05Z3-0678	is_below	18504	
p05Z3-0679	sealed_by	18495	
p05Z3-0683	is_below	18449	

<b>Locus</b> WJ 18515	<b>Dor</b> 20 00	<b>Fld</b> G <sub>1</sub>	<b>Sq</b> A <sub>1</sub> 33 34	<b>Loc. type</b> field Stone wall
<b>Open</b> 1.0 / 08 / 00	<b>High at</b> 1.3.03 SW	<b>Low at</b> 1.2.81 E	<b>Seals:</b> _____	
<b>Close</b> 1.4 / 08 / 00	<del>1.2.03 SW</del>	<del>1.2.81 E</del>	<b>Sealed by:</b> 18495 _____	
<b>Floor:</b> type _____	<b>Length</b> 3.25	<b>Width</b> 0.55	<b>Vol</b> _____	<b>Loci</b> 18504 18449 _____
<b>Value</b> L <sub>15</sub>	<b>Remove</b> _ / _ / _	<b>Drawn?</b> Y <sub>15</sub>	<b>above</b> _____	
<b>Photo #(1)</b> _____	<b>Photo #(2)</b> _____		<b>Loci</b> _____	
<b>Written by:</b> WJSB	<b>Checked by:</b> EBS		<b>below</b> _____	
<b>Unit</b> _____	<b>Phase</b> _____	<b>Stage</b> _____	<b>Stratum</b> _____	<b>PoM</b> _____

**Summary**

**Opened:** N section of wall W18515 uncovered when grey ashy layer of tub bedding was removed. S section uncovered during cleaning (L18449) ✓ (L18504)

**Limits (N)** W18516  
**(S)** Corner with W18514, Bank  
**(E)** FT 18520, L18509  
**(W)** FT 18519, FT 18527

**Closed:** not excavated at end of season.

**Matrix:** Field stones: Large facing stones (20-30cm diam), some very large stones (50cm diam), centre made up of small (10-15cm) field stones.

**Relations:** W18515 is bonded with W18514 in the S and with W18516 in the N. The top of W18515<sup>(N of W9961)</sup> was covered by the bedding of Ranbir's tub (L18504 and L18495).  
 S of W9961 FT18509 reaches W18515 on the W.  
 S of W9961 W18515 cuts into FT18512 (see FT18527)  
 N of W9961 W18515 cuts into L18507 (see FT18519) and into L18508 (see FT18520)  
 W9961 is built on top of W18515. FT18522 to the N of W9961 cuts into W18515. The cavity left by the removed stones was filled with tub make-up, especially crushed kurkar (L18495 and L18504).

see card for L18503 for Ph10 subphases.

10/2/00:  
 Numbers  
 from Tara:  
 L18509  
 W9961  
 W18515

see card for L18503 for Ph 10 subphases.

**Additional Observations/Value:** High value - part of Ph 10 building with associated floor.







192967



192969

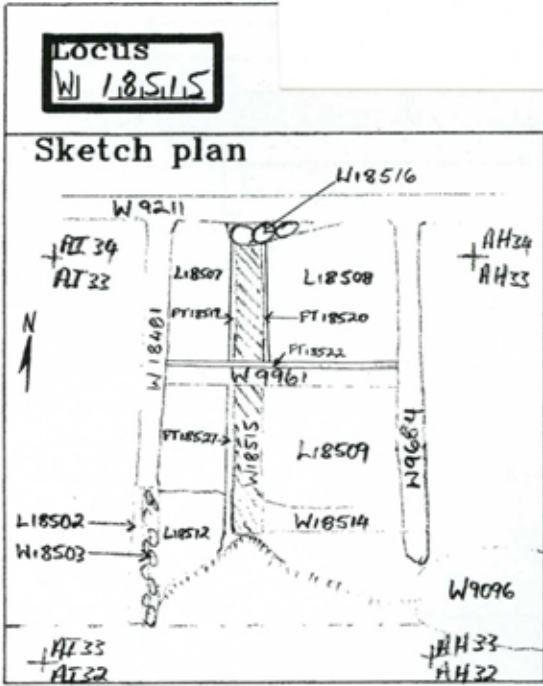
\* Note: on Photos 192967 and 192969  
L18507 is labeled L18509



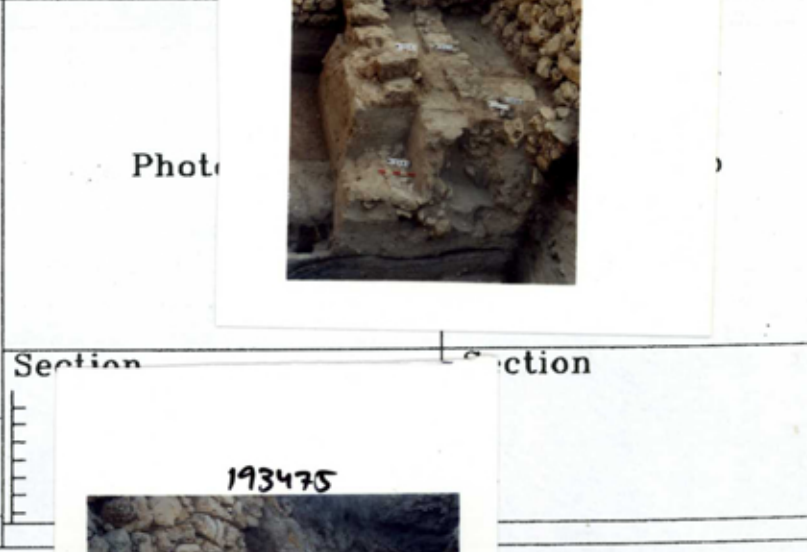
193473



193444



193445



193475