

Locus W 18528	Dor 20 00	Fld G ₁	Sq A ₁ B ₂	Loc. type fieldstone wall.
Open 13/08/00	Date	High at 11.42 E	Low at 11.35 W	Seals:
Close 14/08/00		11.42 E	11.35 W	Sealed by:
Floor: type				Loci ^{Cleghra} 18441 18451?
Length 0.55	Width 0.50	Vol		above
Value 41	Remove	Drawn? YES		below
Photo # (1)		Photo # (2)		Loci 18529?
Written by: HSB		Checked by: EBS		below

Unit	Phase	Stage	Stratum	PoM
-------------	--------------	--------------	----------------	------------

Summary _____

Opened: Two stones in line with Ghost RT 18529, which is also aligned with the wall pedestal of W18229 (199). The pedestal was still standing at the beginning of the season and survives as bank (L18499)

Limits (N) L18526, L18488

(S) L18501

(E) L18529

(W) Bank

Closed: Unexcavated

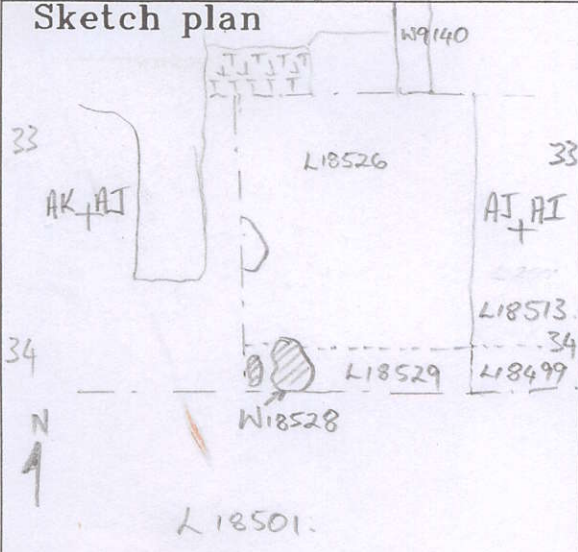
Matrix: 2 stones 30x20cm and 30x45cm

Relations: together w RT 18529, these 2 large stones + numerous small stones mark the line of a F-W wall of "shell installation" F18470. The shell bedding L18478 came up to the stones + stopped on a line.

Additional Observations/Value: high value - for reconstructing scarce Ph II architecture.

Locus
N 18528

Sketch plan



Photo

Photo

Section

Section

