

Locus Card

DOR 2003

L 18900 *Area* G *Sq:* AJ- /33- *Loc. type:* foundation trench (cleaning
High at Low at *written by:* EBS created 27/07/2003
Open 14/07/2003 13.71 n 13.51 s *checked by:* EBS updated: 29/07/2003
Close 14/07/2003 13.57 n 13.40 s **Floor** 0.00
Length 2.70 width: 0.40 volume: Floor type (old)
Removed: 14/07/2003 Drawn? No

Integrity:

u

unit: -- *phase:* 7? / 8? *stage:* iv? / v? *stratum:* *PoM:*

summary:

Opened: Removed W9914. Foundation trench was visible under pedestalled W9914.

Limits (N) W9211

(S) matrix below W9066

(E) L9922 and L9923 ('93)

(W) L9939 and L9940 ('93)

Closed: distinctive trench matrix removed (loci below = baulk cleaning)

Matrix: light brown sandy soil matrix, seemingly originally compact but now criss-crossed by plant roots

Relations: Width varies from .4 in N to .3 in south. This locus has been exposed at the sides since 1993 and 1994, and plants growing between the stones disturbed the matrix. Material to E and W was excavated in 1993 and 1994 respectively leaving the wall pedestalled.

Importance: low value; highly disturbed and exposed nearly 10 years

Images

L 18900

Related loci:

Features

is_below

9914

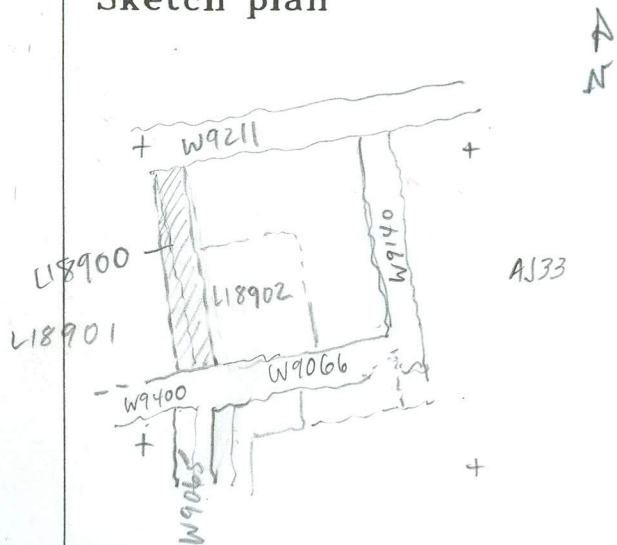
sealed_by

9914

Locus

418900

Sketch plan



Photo

Photo

Section

Section