

Locus Card

DOR 2003

L 18901 *Area G* *Sq:* AK- /33- *Loc. type:* stratified accumulation
High at Low at *written by:* EBS created 27/07/2003
Open 14/07/2003 13.49 nw 13.32 ne *checked by:* EBS updated: 29/07/2003
Close 16/07/2003 13.26 ne 13.15 ne **Floor** 13.40 s
Length 2.00 width: 2.20 volume: Floor type (old)
Removed: Drawn? No

Integrity:

u

unit: -- *phase:* 7b? / 8? *stage:* iv? / v? *stratum:* *PoM:*
summary:

Opened: matrix below the plastic, last excavated in 1994

Limits (N) fallen ashlar

(S) W9400

(E) baulk under W9914

(W) W9975 (u)

Closed: came down on heterogeneous matrix in N and more compact matrix with large sherds and bones in S

Matrix: mudbrick detritis with orange brick and charcoal flecks in W, concentration of large bones and sherds in SE and loose heterogeneous matrix in NE quadrant

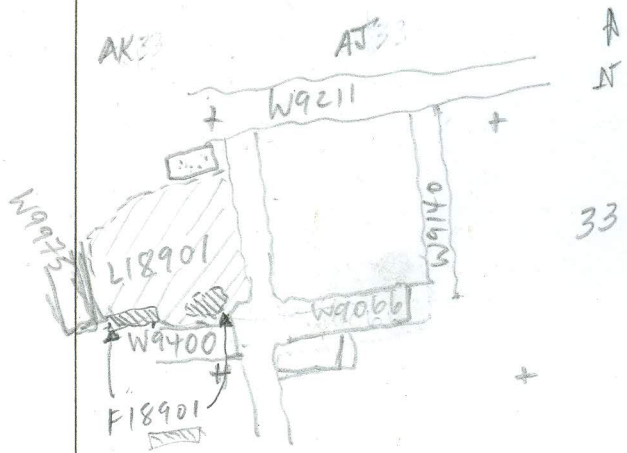
Relations: L18902 reaches W9975 to W, W9400 to S, material under W9914 to E and baulk created under fallen ashlar. Basket #187314 in SE corner isolated due to quantities of large bones and large sherds and the presence of the dark brown colored mud used for bricks, levelling fill, mortar and wall facing. L18901 came down onto a thin grey surface preserved in the SW corner that didn't reach W9400. The "floor" also shows as a grey band in the doorway between W9400 and W18921.

Importance: PH 7 floor associated with W9400 and W9975 (u) and W18921

Images	L 18901	Related loci:	Features
	is_above	18904	
	is_below	18063	

Locus
L 18901

Sketch plan



Photo

Photo

Section

Section

