

Locus Card

DOR 2003

L 18902 *Area* G *Sq:* AJ- /33- *Loc. type:* stratified accumulation(?)
High at Low at *written by:* ebs created 27/07/2003
Open 14/07/2003 13.07 w 12.97 sw *checked by:* ebs updated: 29/07/2003
Close 21/07/2003 12.85 w 12.77 ne **Floor** 0.00
Length 1.70 width: 1.20 volume: Floor type (old)
Removed: Drawn? Yes

Integrity:

u

unit: -- *phase:* 8 *stage:* v *stratum:* *PoM:*
summary:

Opened: Beginning of season. A continuation of L9954 exc. in 1993.

Limits (N) L18903

(S) baulk under W9066

(E) L18903

(W) baulk under W9914

Closed:

Matrix: Grey matrix with what seem like remnants of successive resurfacings -- thick white material

Weizmann

determined to be PHYTOLITHS! The "surfaces" are depressed in the center like a shallow basin.

Relations: Weizmann sampled L18902 in section (excavated as L9954 in 1993). Three samples taken WD. 18902. Sample #1 from lower sloping grey "surface," #2 from intervening brownish deposit, and #3 from upper grey/white surface/tip line. Samples taken from white "plaster" of floor with comparative samples from clean mudbrick material in NW corner of room and 18903 fill. 16.7.03 five more samples taken from the installation and for comparative purposes. "Installation" white "plaster" is composed of phytoliths - not plaster. To the north the white material slopes up to meet two bricks forming a straight line. To the east the material also appears to meet L18903 on a straight line, but without white the matrix is difficult to distinguish from grey lenses in L18903. A whitish material lines the edges and is clearly seen in section (from square AJ-32). In section the whitish boundary abuts the "destruction debris" in L18903, but in excavation to the E an ashy hump forms a barrier between the grey fill and L18903.

Importance: unclear if ph 9 destruction debris or ph 8 dug down into earlier debris

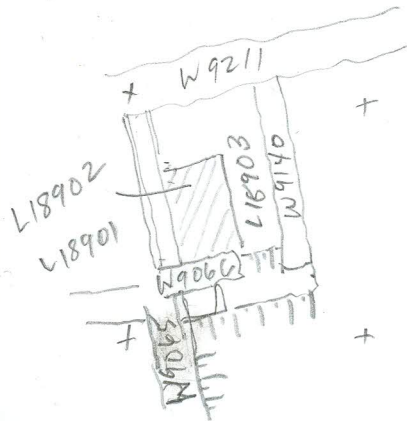
Images	L 18902	Related loci:	Features
	is_above	18910	
	is_below	9954	

Locus

W 18902

Sketch plan

AJ 33



Photo

Photo

Section

Section