

Locus Card

DOR 2003

L 18904 *Area* G *Sq:* AK- /33- *Loc. type:* fill down to floor
High at Low at *written by:* EBS created 27/07/2003
Open 16/07/2003 13.25 s 13.17 *checked by:* EBS updated: 29/07/2003
Close 17/07/2003 13.20 13.12 **Floor** 13.19
Length 2.00 width: 2.20 volume: Floor type (old)
Removed: 17/07/2003 Drawn? No

p

Integrity:

u

unit: -- *phase:* 8 *stage:* v *stratum:* *PoM:*
summary:

Opened: L18901 (above) came down on large bones and large sherds (in SW quadrant) in brown mudbrick detritus with some ash.

Limits (N) baulk under ashlar, W18912

(S) baulk below W9400

(E) baulk under W9914

(W) W9975

Closed: Came down onto clean brown sandy matrix with more pottery in S and more heterogeneous matrix in N.

Matrix: clean brown sandy soil in S and heterogeneous matrix in N noted but no clear distinction between them

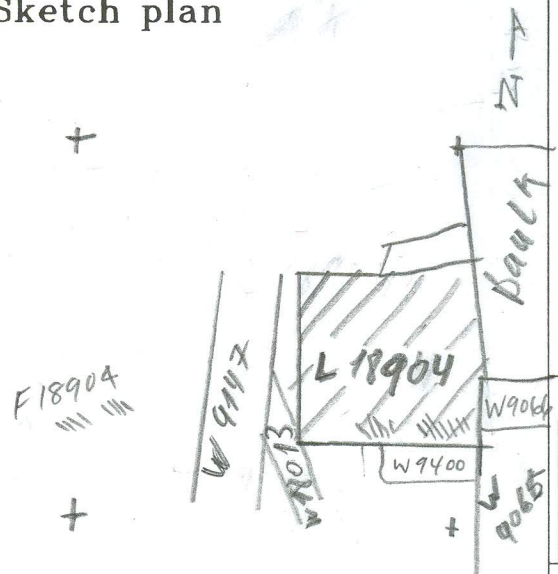
Relations: Covered the entire area reaching all baulks. Matricies of L18905 and L18906 below were evident but not clearly delineated.

Importance: low value, fill with 2 matricies distinguished with continued excavation

Images	L 18904	Related loci:	Features
	is_above	18905	
	is_below	18901	
	is_above	18906	

Locus
L 18904

Sketch plan



Photo

Photo

Section

Section

