

Locus Card

DOR 2003

L 18906 *Area* G *Sq:* AK- /33- *Loc. type:* fill
High at Low at *written by:* ebs created 27/07/2003
Open 17/07/2003 13.20 e 13.12 w *checked by:* ebs updated: 29/07/2003
Close 18/07/2003 13.05 e 13.01 w **Floor** 0.00
Length 2.00 width: 0.60 volume: Floor type (old)
Removed: Drawn? No

Integrity:

u

unit: -- *phase:* 8 *stage:* v *stratum:* *PoM:*

summary:

Opened: when different matrices first distinguished in L18904 could be clearly delineated

Limits (N) L18905

(S) baulk under W9400

(E) baulk under W9066

(W) W9975

Closed: reached L18911 in E

Matrix: brown sandy matrix, more compact than L18905, little occupational debris, cleaner than L18905

Relations: twilight zone between L18905 and L18906 as while the distinction was clear no exact demarcation was possible

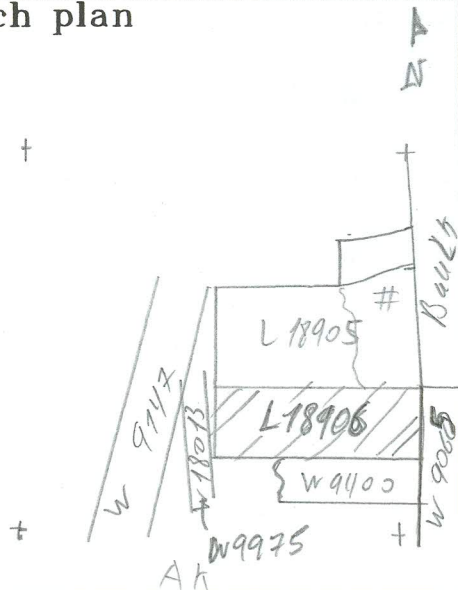
Importance: LOW - limited exposure with few occupational remains

Images	L 18906	Related loci:	Features
	is_above	18907	
	is_below	18904	
	is_above	18908	

Locus
L 18900

Sketch plan

33



Photo

Photo

Section

Section

