

# Locus Card

DOR 2003

L 18907      *Area* G      *Sq:* AK- /33-      *Loc. type:* fill or collapse  
High at Low at      *written by:* EBS      created 27/07/2003  
Open 18/07/2003 13.10 ne 13.06 w      *checked by:* EBS      updated: 29/07/2003  
Close 25/07/2003 12.89 s 12.83 nw      **Floor** 0.00  
Length 2.20 width: 1.10 volume:      Floor type (old)  
Removed:      Drawn? No

Integrity:

u

*unit:* --      *phase:* 9?      *stage:* vi      *stratum:*      *PoM:*  
*summary:*

**Opened:** L18906 and L18905 came down on L18911 in the eastern half and more fillor collapse in the west, so new locus numbers were assigned

**Limits (N)** W18912

(S) Southern extent of excavation ("doorway") and wall stub (?)

(E) matrix under L18911, L18911

(W) W9975

**Closed:** not closed, end of season (loci below = unexcavated)

**Matrix:** compact brown mudbrick detritis with little occupational debris; charcoal flecks

**Relations:** This matrix is very similar to L18905 and L18906 above, and appears to continue under L18911 to the east. It is all mudbrick detritis with more or less occupational debris. Thie cleaner, more compact matrix against the walls bay be wall slough/melt.

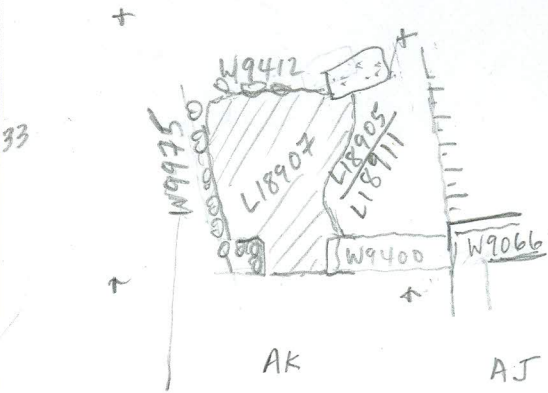
**Importance:** low - limited exposure

Images	L 18907	Related loci:	Features
	is_below	18906	
	is_below	18905	

Locus  
L 18907

Sketch plan

A  
N



Photo

Photo

Section

Section

