

# Locus Card

DOR 2003

L 18915      *Area* G      *Sq:* AJ- /33-      *Loc. type:* mudbrick detritis  
High at Low at      *written by:* EBS      created 29/07/2003  
Open 23/07/2003 12.76 se 12.56 s      *checked by:* EBS      updated: 29/07/2003  
Close 25/07/2003 12.54 s 12.52 n      **Floor** 0.00  
Length 0.90 width: 0.80 volume:      Floor type (old)  
Removed:      Drawn? No

Integrity:

s

*unit:* --      *phase:* 9      *stage:* vi      *stratum:*      *PoM:*  
*summary:*

**Opened:** under various sloping layers of L18903 came down on homogeneous dark brown mudbrick matrix with mudbrick fragments

**Limits (N)** L18903

(S) baulk

(E) W9104

(W) L18919

**Closed:** entire area of excavation constituted a single locus

**Matrix:** dark brown mudbrick matrix with small kurkar inclusions, mudbrick fragments discernable in detritis

**Relations:** L18916 lay in a heap against W9140, on top of L18915. Above L18915 the matricies, including L18916, lay in splays or lenses sloping down from E to W. L18915 lay flat. L18919, which appears in section to be a continuation of L18913/L18917, bordered L18915 on the west. L18915 may be the northern extension of W9915 (preserved to 13.20m) in AJ32.

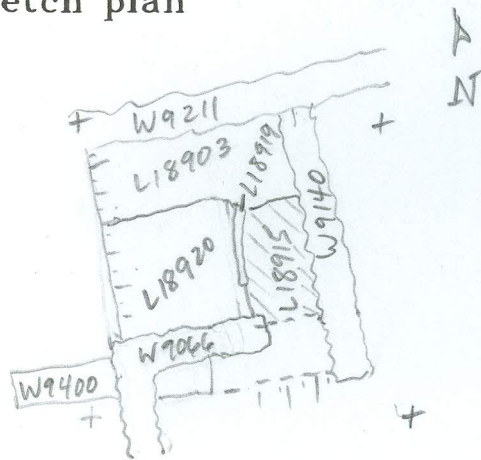
A portion of this locus was sealed by L18916, but the underlying sealed portion was not distinguished from the rest of the matrix.

**Importance:** Possible northern extension of Phase 10 and 9 wall.

Images	L 18915	Related loci:	Features
	is_above	18922	
	is_below	18903	
	is_below	18916	

Locus  
L 18915

Sketch plan



AJ 33

Photo

Photo

Section

Section