

Locus Card

DOR 2003

L 18917 *Area* G *Sq:* AJ- /33- *Loc. type:* fill
High at Low at *written by:* EBS created 29/07/2003
Open 24/07/2003 12.60 se 12.49 e *checked by:* EBS updated: 29/07/2003
Close 25/07/2003 12.56 sw 12.41 se **Floor** 0.00
Length 1.80 width: 1.20 volume: Floor type (old)
Removed: Drawn? No

Integrity:

u

unit: -- *phase:* 8? / 9? *stage:* v? vi? *stratum:* *PoM:*
summary:

Opened: Irregular (inexplicable) contours continued down until this matrix was isolated as a single unit.

Limits (N) L18903

(S) baulk under W9066

(E) L18915

(W) baulk under W9914

Closed: no more light grey patches which had defined extent of locus

Matrix: Heterogeneous matrix with compact brown matrix chunks with white organics (?), large bones including articulated fish and large sherds. Light grey "surfacing" material sloped up against L18920 in SW, L18919 in E and L18903 in S and was traceable in small patches throughout.

Relations: The interpretation of this locus remains elusive. See the discussion on the L18910 card. The contours suggest it is a fill in a space defined by the "L-shaped" L18903. This fill consists of ashy grey and mudbrick matrices with increasing amounts of occupational debris at lower elevations. A further complicating factor is that L18903 may be fill in (L18903) benches against W9211 and W9140, though these would be wide benches or platforms. Alternatively, L18903 may be fill in robber trenches of Phase 10 or earlier 9 walls though it doesn't seem logical to have wide stone walls within and adjacent to substantial, contemporary stone walls.

L18917 contours appear to cut the stratified accumulation of L18909 = L18920 supporting the interpretation that this is a pit or intrusive matrix. As with L18910 and L18913 above, a twilight zone was kept between L18917 and L18903.

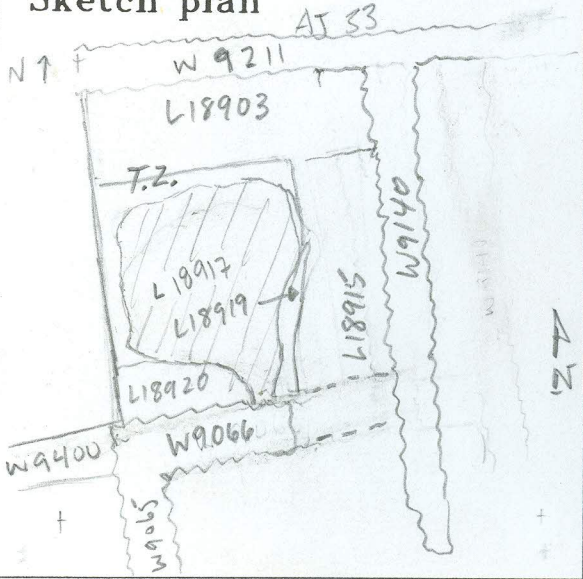
Weizmann determined that L1891 is calcite rich - probably derived from wood ash, clay and quartz. Chunks of dirt with the thin white remains consisted of a lot of calcite. The white derives not from crushed limestone, but probably from an ash rich matrix.

Importance: Medium - interpretation of locus - and hence its phasing - is uncertain: either phase 8 or 9.

Images	L 18917	Related loci:	Features
	is_above	18922	
	is_below	18913	

Locus
L18917

Sketch plan



Photo

Photo

Section

Section

