

Locus Card

DOR 2003

L 18919 *Area* G *Sq:* AJ- /33- *Loc. type:* stratified accumulation (?)
High at Low at *written by:* EBS created 29/07/2003
Open 24/07/2003 12.61 sw 12.55 ne *checked by:* EBS updated: 01/08/2004
Close 25/07/2003 12.51 ne 12.41 sw **Floor** 0.00
Length 1.35 width: 0.20 volume: Floor type (old)
Removed: Drawn? No

Integrity:

u

unit: -- *phase:* 8? / 9? *stage:* v? vi? *stratum:* *PoM:*
summary:

Opened: Below the TZ between L18913 and L18903 a distinctive matrix appeared between the mudbrick of L18915 and the sloping fill of L18917.

Limits (N) L18917
(S) L18915
(E) L18915
(W) L18920

Closed: L18915, L18919, L18917 and L18920 all came down on a continuous matrix.

Matrix: Homogeneous greyish matrix without the kurkar inclusions of L18915 or sloping white patches of L18917.

Relations: Continuation of L18920 but cut by L18917. Below "twilight zone" ® of L18913. In section this matrix appears to be a stratified accumulation, but in the very narrow preserved portion no stratification was evident. Half a faience bead found. L18919 appears to abut L18915 to the E and be cut by L18917 on the west.

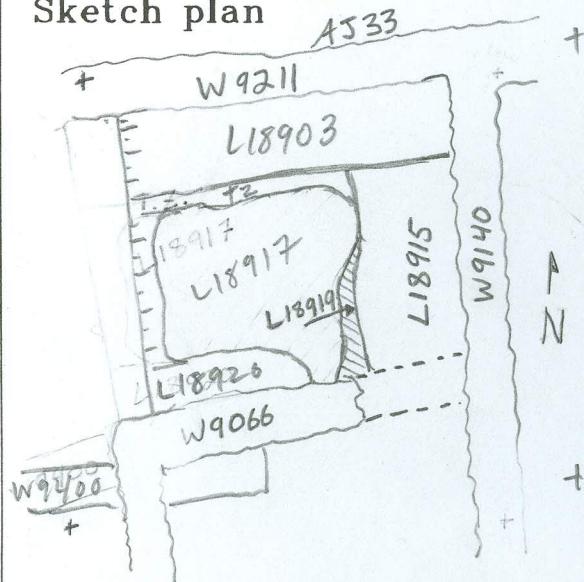
Importance: LOW - VERY limited exposure and interpretation of deposit uncertain.

Images	L 18919	Related loci:	Features
p09Z3-6101	is_above	18922	
p09Z3-6102	is_below	18915	
p09Z3-6103	is_below	18913	
p09Z3-6104			

Locus

L 18919

Sketch plan



Photo

Photo

Section

Section

