

Locus Card

DOR 2003

L 18920 *Area* G *Sq:* AJ- /33- *Loc. type:* stratified accumulation/pit
High at Low at *written by:* created 29/07/2003
Open 24/07/2003 12.65 sw 12.62 e *checked by:* updated: 01/08/2004
Close 25/07/2003 12.56 w 12.51 e **Floor** 0.00
Length 0.94 width: 0.70 volume: Floor type (old)
Removed: Drawn? No

Integrity:

u

unit: -- *phase:* 8 *stage:* v *stratum:* *PoM:*

summary:

Opened: The line between L18909 and L18910 was again clearly evident, so the locus was reestablished.

Limits (N) L18917

(S) baulk under W9066

(E) L18917

(W) baulk under W9914

Closed: L18920, L18917, L18919, L18903, and L18915 all came down on a continuous matrix labelled L18922.

Matrix: Clearly striated ashy grey matrix

Relations: Cut by L18917 creating the approximately 1/4 of a circle shape. This is a continuation of L18909 which was identified above but then combined into L18913. L18909 = L18920 = AJ32, L9997. See L18910 for a discussion of relationships.

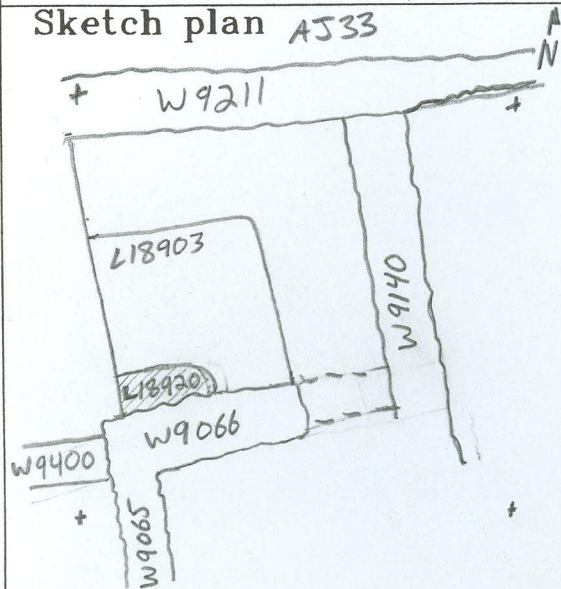
Importance: Low - very limited exposure.

Images	L 18920	Related loci:	Features
	is_above	18922	
	is_below	18913	

Locus

4 18920

Sketch plan A533



Photo

Photo

Section

Section

